

ARCH 18, 1966
Menu
ch 28 — Beef
butter, cot
alad, cookie, m
ch 23 — Hot
mashed po
corn, chocolate
arch 24 — Ch
french fries, m
lk.
arch 25 — Pa
up and crack
h 28 — Piza
ts, lettuce wa
) Milk.
RANT
94
oking
JG
Rolls
ork and Drin

Legion Post Celebrates 46th Birthday



GEORGE WALWORTH, left, was presented a certificate for 45 years of continuous membership in the American Legion by Elton F. Guenther, commander of the Herbert J. McKune, American Legion Post No. 31 at their 46th Anniversary Banquet, Saturday evening. Walworth is the only member with 45 years membership. Two were given 40-year citations, three, 35-year citations, eleven were cited for 30 years, three for 25 years, 11 for 20 years and 14 charter members were introduced.

The Herbert J. McKune Post 31 American Legion 46th birthday celebration was held Saturday evening at the Legion Home at Cavanaugh Lake.

115 members and guests were present for a planned pot-luck supper of baked ham, escalloped potatoes and all the trimmings. The dinner was planned in conjunction with the Legion Auxiliary, who also took part in the ceremonies.

Carl Heldt, Veterans Affairs officer from Ann Arbor was the guest speaker.

Continuous memberships awards were made with George Walworth receiving an award for 45 years of consecutive membership. He received a certificate and special membership card for his service. Carl Mayer and Paul Maroney also received certificates and cards for 40 years of membership; Grant C. Schooley, Floyd Rowe and Wilbur Hinderer, certificates and cards for 35 years; Sidney Schenk, Roy Miller, John Hummel, Frank Gross, Leon Fox, Julius Elsie, Edwin Eaton, Merle Barr, Sr., Joseph Swikrath, Irwin Klumpp and Elmer Mayer certificates and cards for 30 years; Walter Schrader, Clare H. Fenn and Fremont S. Armstrong certificates and cards for 25 years; and Francis Trunz, David H. Strieler, J. R. Seitz, Rudolph Schmitz, Ray O. Millman, Huron McManus, Alfred Juerg-

ens, Richard E. Hoelzer, Lyle Haselewardt, Donald W. Doll and Benjamin Bille, special membership cards for 20 years.

Special membership cards were awarded to the following for 15 years membership: Frederick Wagner, Peter Volak, Edward Visel, Ronald Spaulding, Stephen Slane, Carl D. Schneider, Wilbur Pluck, John Pierson, Charles Pierce, Norman Niehaus, Charles M. Lancaster, Luther M. Kusterer, Peter M. Kinsey, Wesley J. Howes, George Hafner, Elton Guenther, Robert G. Foster, William E. Farrell, Louis Buehner, William K. Bless and William L. Bennett.

10-year membership cards were given to David Winans, George Winans, Donald Wheeler, Charles Waller, Douglas H. Voight, O. L. Turner, Charles J. Spencer, Harman Reed, George L. Palmer, Donald L. O'Dell, Thomas McClellan, Ray Lutovsky, Walter Leonard, George Knickerbocker, Richard Kalmbach, Harold Jones, Howard Fenn, Glenn Erskine, Eldean Eisdele, Marion Dietle, Joe Doering, Charles Cook, Keith Boylan, Donald H. Bacon, M. J. Anderson, J. R. Altenberndt and David Myers.

The Legion Auxiliary also gave awards to their charter members, Virginia Brock, Alma Bahmiller, Winifred Ulrich, Matilda Hinderer, Ruth Schenk, Gladys Klumpp, Selma Rowe, Florence O'Hara, (Continued on page six)



BURNING OF THE MORTGAGE: Elton F. Guenther, commander of Herbert J. McKune Post 31, American Legion, supplies the fire while David H. Strieler holds the mortgage going up in smoke. The ceremony was part of the 46th Anniversary Banquet held Saturday at the American Legion Home at Cavanaugh Lake.

WEATHER

	Min.	Max.	Pres.
Wednesday, March 17	35	41	0.51
Thursday, March 18	18	26	Tr.
Friday, March 19	11	22	Tr.
Saturday, March 20	13	22	Tr.
Sunday, March 21	12	22	Tr.
Monday, March 22	14	40	0.12
Tuesday, March 23	10	28	0.05

The Chelsea Standard

QUOTE
The degree of our sacrifice in feeding the hungry is the degree of our understanding of the world today.
—Dwight D. Eisenhower

SEVENTY-FOURTH YEAR—No. 89 14 Pages This Week CHELSEA, MICHIGAN, THURSDAY, MARCH 25, 1966 10c per Copy SUBSCRIPTION \$3.00 PER YEAR

People Speak, School Board Acts on Advice

Decision Made To Proceed With Complete 3-Point Building Program

True to its word, the Chelsea Board of Education listened, then acted on the advice it received in public forum Tuesday night on how to meet our School Building Needs' attended by some 200 persons. But not without some question among Board members.

A lot of people expressed themselves in favor of the whole package last night. "Board-Member [Name] summed up the citizen's comments when reluctance to expand the building program was given by Board Member Robert [Name].

By an 8-1 vote, the Board took the first step toward a three-point program to build a new high school and to add the necessary classrooms for the high school and elementary students as well.

The step taken was to definitely plan complete architect's plans for the new junior high and for additional elementary classrooms. Plans are already complete for high school addition.) Only the Kuhl voted against the package saying "I'm not going to do anything." He commented further that he didn't believe in a group present at the meeting represented a cross-section. And another Board member commented, almost inaudibly, that "200 people don't go out on a reasonable night like this for the sake of it."

Work will begin immediately to plan all the knowledge needed to proceed with the construction program. Board Member Don Al [Name] spoke out for organization of committees to help with the various problems such as site selection and determination of just what each of the three building projects will include.

All systems seemed to be "go" at the close of the Board's official session, with the byword "present the whole package" the people will know just what we're trying to do to meet the community's educational needs," said School Superintendent Charles [Name] pointing out that there's no time to lose, for "we're behind the curve now."

A letter was read from the Public Health Engineer, Joseph W. [Name], stating that after a complete sanitary survey of the Junior High School building, the building presents a number of serious sanitary and safety problems, and only a complete renovation program will correct them.

In January 1965, after an inspection, the hazards of open stairways and the location of the heating plant together with the lack of toilet facilities was pointed out. Continued use of the building by the architects to determine the feasibility of any renovations in view of the serious deficiencies and the age of the structure.

In December of 1958 and again in January 1961 the problems of the building were pointed out and the department advised that professional services be sought so the building could be renovated for continued use. It was requested also, that the State Fire Marshal make evaluations of these hazards. There is no record of his visit or report.

Gross sanitary problems still exist due to the inadequate number of toilets and lavatories. Toilet rooms have insufficient ventilation and floors and walls are impossible to properly clean.

The potential fire hazard still exists from open stairways and the location of the heating plant under class rooms. New evidence of floor sagging and plaster cracks may be indicative of structural failure.

The Health Department advises immediate evaluations of the structural safety of the building by a competent engineer and an inspection by the Michigan State Fire Marshal.

The Board will withhold any advice until these evaluations are made and has the guidance from the reports. If at this time it appears the building may be used for some time some plan will be worked out for improvement of sanitation facilities.

Council Seeks Information on Sidewalk Repairs

The Village Council is interested in obtaining information from citizens regarding new sidewalks needed for construction and bad sections of sidewalks in front of their homes which may possibly be included in the sidewalk repair and replacement program.

It will be appreciated if anyone with this information will please send a written request to the Village of Chelsea, in care of George Winans, Village Clerk, so that a planned program may be instigated.

Thieves Break in, Take \$860 Cash At Chelsea Lanes

Some time after 1 a.m. Monday morning a thief forced the lock on the front door of Chelsea Lanes, entered and took \$860 in cash from the desk drawer in the office and left by the back door.

Apparently nothing else was touched and no personal property damaged.

Police Chief John Palmer says that there are no leads of any kind as of this time but it appears to have been a professional job.

Kiwanis Club Observes 41st Birthday

The Kiwanis Club held their 41st annual birthday party at the Congregational church Monday at 6:30 p.m.

The ladies, who were special guests at the affair, were presented with a carnation corsage and the tables were centered with hyacinths.

President Don Turner presided at the meeting and after group singing, guests were introduced.

Eleven members were present from the Pinckney club sponsored in 1954, by Chelsea. The president of the club, Garry Eichman, gave the response to their introduction.

Past Lt. Gov. Clarence Hanselman responded to the introduction of Dexter club members. The Dexter club was sponsored by Chelsea in 1937. 12 members were present from Dexter.

Special congratulations went to Alfred and Lydia Gross of the Dexter club who recently celebrated their golden wedding anniversary.

Second vice-president Paul G. Schmale, Jr., as program chairman introduced Dr. Gorton Rietmiller, president of Olivet College, who spoke on the subject "What Shall We Build?"

Attendance awards were presented by Edward E. Gordon, Lt. (Continued on page three)

Easter Egg Hunt Slated By Jaycees

Chelsea Jaycees with the assistance of the Jaycee Auxiliary will entertain Chelsea area children on Saturday, April 17, at 2 p.m. at the Chelsea Athletic Field.

The Jaycee Auxiliary as in previous years will do the boiling and coloring of the eggs. The committee for this is chairman, Joanne Rowe; co-chairmen, Donna Blough and Neil Wright.

Chairman for the Jaycees is Art Steinauer with Robin Wright as co-chairman.

Prizes will be given in several categories and all children are invited to participate in this annual event.



"OKLAHOMA" SCENE: Playgoers will have a fringe on top" while Aunt Eller (Barbara Doyle), chance this week-end to see the famous musical "Oklahoma" at Chelsea High School. The scene shown above finds Curly (John Bowling) telling Laurey (Audrey Hayes) about his "surrey with the

Senior Class Presenting 'Oklahoma'

3rd Lenten Service Set at Congl. Church

The third in the Community Lenten Services sponsored by the Chelsea Ministers' Association, will be held in the First Congregational church, United Church of Christ.

The preacher at this service will be the Rt. Rev. Richard S. Emrich, Episcopal Bishop of Michigan. Bishop Emrich is well known for his weekly column which appears in The Detroit News.

Bishop Emrich has also been called upon to serve his community and the state on several occasions. The most recent such special assignment was under the direction of Governor Romney and involved the Detroit newspaper strike.

Another feature of the Lenten Services is the Community Choir which has been rehearsing each week at the Methodist church. Their rehearsals have been held from 9 p.m. to 9:30 p.m. Under the direction of Howard Bond they are preparing for the service on April 1.

Any interested parties are invited to take part in this community choir.

Area Senior Citizens Form Organization

At a meeting held Monday evening a group of more than 40 senior citizens formed a senior citizens organization.

The organization, with assistance from the Chelsea Area Recreation Commission, will open a Senior Citizens Center in the old dime store on the corner of Main and Middle Sts. The center will be open each day Monday through Saturday from 10 a.m. until 5 p.m. Tom Ashley will be in charge.

All senior citizens of the Chelsea Area are invited to drop in whenever they are uptown, to visit with friends, play cards or just sit and relax.

Officers elected for the group are: Joseph Protz, president; Mrs. Margaret Dietle, secretary and Mrs. Lila List, treasurer.

Board of Directors named includes Mrs. Winifred Coffron, Mrs. Vera Heim, Mrs. M. L. Knickerbocker and Mr. and Mrs. Wilbert Brutenwischer.

The officers and Board of Directors will plan additional activities which will be announced later.

Mrs. Francis Alber who has been hospitalized at St. Joseph Mercy Hospital in Ann Arbor is now at Cedar Knoll Rest Home, car.

Two-Year-Old Consumes Bottle of Aspirin Tablets

Two-year-old Linda Karen Arnett of Chelsea was taken to St. Joseph's Mercy Hospital over the week-end after she had consumed the contents of an aspirin bottle, sheriff's deputies reported.

The girl was taken to the hospital by a car driven by her mother, Mrs. Joanne Arnett, which was given an escort by a sheriff's car.

Four Win FFA State Farmer Degree

—See Story on Page Six.



DICK MCCALLA DANNY EDER DONALD HINDERER KENNETH REINHARDT

Established 1871
The Chelsea Standard
 Telephone GR 5-3591
 General Excellence Award by Michigan Press Association
 1951-1952-1953-1954-1955-1956
 Walter P. Leonard—Editor and Publisher

Published every Thursday morning at 800 North Main Street, Chelsea, Mich., and second class postage paid at Chelsea, Mich., under the Act of March 3, 1879.

Subscription Rates (Payable in Advance)
 In Michigan: One Year \$3.00 Six Months \$1.75 Single Copies \$.10
 Outside Michigan: One Year \$4.00 Six Months \$2.25 Single Copies \$.10
 Service men or women, anywhere, 1 year \$3.00

NATIONAL EDITORIAL ASSOCIATION
 AFFILIATE MEMBER

GOVERNOR ROMNEY REPORTS

I am happy to announce that we will resume our weekly Citizen Meetings on Thursday mornings, beginning March 25.

I regret that a combination of circumstances including the 1964 campaign, preparation for my second administration and the beginning of the 1965 session of the State Legislature made it impossible for me to hold these sessions regularly in recent months.

But I believe it is essential to a democratic system of government that the people have ready access to their elected officials. I am certain these renewed Thursday morning sessions will be beneficial to all concerned as they were before and I am looking forward to them.

Those planning to take part should determine in advance whether the meetings will be held, as pressures of state business may occasionally result in their cancellation.

The same "ground rules" will apply as before. Each citizen will be taken on a first-come, first-served basis until noon and will be given a maximum of five minutes in privacy with me and my staff.

In another important matter last week I requested the State Supreme Court to make an immediate determination of a cash-out recently in a lower court—involving the constitutionality of the Michigan Industrial Development Revenue Bond Act.

The statute in question, Act 62

of 1963, was adopted to authorize Michigan municipalities to issue self-liquidating bonds for the acquisition and construction of industrial buildings and sites. These facilities would then be leased to private enterprise in return for rentals which would be applied to retirement of the bonds.

It is of the utmost importance to the entire state that the validity of the bonding authority granted by Act 62 be finally passed upon for the benefit of Michigan communities.

The need for such authority has become increasingly evident because of similar legislation passed by other states which has induced Michigan industry to locate elsewhere. The competition between the states is becoming increasingly heavy and in order for Michigan to remain competitive, an interpretation of Act 62 is needed.

Construction of Act 62 is also important to the non-industrialized areas of Michigan, particularly the Upper Peninsula which has recently suffered severe losses due to the closing of local industrial concerns.

Through its contacts with various business organizations the Michigan Economic Expansion Department has found that Act 62 is regarded as a significant indication of Michigan's desire to assist industrial growth. The Department has also found that many other communities would be willing to utilize the provisions of Act 62 but are presently unable to do so pending the outcome of the case.

Also last week I supported the State Tax Commission in its tax depreciation schedule for 1965 aimed at greater tax justice by bringing about uniformity of real and personal property assessments.

After a thorough examination of the facts involved in this controversy, I have concluded that the Tax Commission has acted in the best interests of Michigan. The action taken will be helpful in stimulating our state's economic growth and the much higher job levels needed in coming years.

It has been widely known for years that the Tax Commission was preparing the new schedule. The Commission consulted with assessors in all 17 counties in its preparation. The Commission is united in its judgment that we should proceed with the new schedule at this time and after careful consideration I am in agreement with them.

The first U. S. offensive land action of World War II was accomplished when the Marines landed at Guadalcanal on Aug. 7, 1942.

2 HOLLYWOOD STARS!
 ★ JOHN BRONFIELD
 "MR. SPORTSMAN"
 ★ JAMES GRIFFITH
 "THE FAMOUS BADMAN"

APR. 3 THRU 11
DETROIT SPORTSMEN'S SHOW
 AND VACATION

See The "PARADE OF CHAMPIONS" BIG STAGE & TANK SHOW Twice a Day 6:00 FREE SEATS EVERY PERFORMANCE HUNDREDS OF SPORTS & TRAVEL EXHIBITS Doors Open Daily 1:00 P.M.

COLISEUM STATE FAIRGROUNDS
 WOODWARD at 8 MILE

WHY MOTHERS' WORK IS NEVER DONE!



★ MICHIGAN MIRROR ★

By Elmer E. White, Secretary, Michigan Press Association

Happy Productions

Some really fine entertainment becomes available in Michigan each summer. For those who love the excitement of the stage and have little opportunity to see live dramatic productions, the Summer Theater offers much. For those who are bitten by the theater bug, it offers training, experience, hard work and fun.

Most theater organizations are similar. Backed by a few intensely interested people or a local organization, the group plans a series of productions during the summer season. They can usually entice nationally known actors to appear. This gives an opportunity for promotion and for local people to work with professionals. Tickets are relatively low priced; quality is rather high.

One of the most successful theater operations is going strong at the Cherry County Playhouse in Traverse City. Under the direction of Miss Ruth Bailey, the theater has presented such well-known artists as Edward Everett Horton, Richard Arlen, Jill Corey, Wendell Corey, Veronica Lake, Julius LaRosa, Charlie Ruggles and many others.

Presentations are top-notch plays or musicals, both from the classics and contemporary theater. At present the following Summer Theaters are listed with the Michigan Tourist Council: the Barn Theater in Augusta; Keweenaw Playhouse, Calumet; Clark Lake Playhouse; Tibbits Opera House, Goldwater; Circle in the Park, Grand Rapids; Ramsell Theater, Manistee; Port City Playhouse, Muskegon; Holly Arbor Theater, Oshtemo; Petoskey Playhouse; Oden; Irish Hills Playhouse; Onsted; Tip-O-The-Thumb Play-

house, Port Austin; Houghton Lake Playhouse, Pigeonville; Red Barn Theater, Saugatuck; Sister Lakes Playhouse; Northern County Playhouse, Southfield; Cherry County Playhouse, Traverse City; White Lake Playhouse.

Defective Cars

Beat-up, defective cars on the highways have been a problem for a long time, but there has been reluctance to produce a law which would require car owners to have brakes, lights, horn, steering and wipers checked. There has been a fear that such a law would be authorized to make inspections and that unnecessary repairs would be charged to unsuspecting motorists.

In view of an experiment last fall, it seems the public will soon have to make up its mind between putting up with high percentage of defective cars we now have and a law which would require inspection and repair.

According to William Palmer, director of Associated Petroleum Industries of Michigan, that organization arranged with gas stations to offer motorists free two-minute inspections. Results were good, but less happy than expected. An average of 35 percent of the motorists stopping at gas stations refused a vehicle check. For the most part, these were cars which looked most obviously to need repair. Apparently owners were afraid it would cost them something to repair their cars.

Of cars checked, about 35 percent needed some kind of repair to lights, brakes, wipers or horn. Many of these drivers did not have cars repaired promptly, stating they were too busy or that they would take care of it later. The choice is whether to risk

fraud in a system which would require motor checkups and repairs or to risk accidents which result from defective automobiles on the highway.

Gas station owners can't be blamed if they are a little sour on plans which try to accommodate the public. Earlier some proprietors had joined in a campaign to help "Keep Michigan Beautiful" by placing trash cans in their stations. These were meant for motorists who stopped so they could empty trash and litter which had accumulated during a trip.

There was wide-spread abuse of these cans. Neighbors filled them with leaves, garbage and other refuse from their homes, including, in one instance, a dead cat. The plan was abandoned.

More Hospitals

Slightly less Federal funds will be available this year for hospital and medical facility construction than was used in 1964, reports Health Commissioner Dr. Albert E. Heustis.

Some \$8,272,050 has been allotted for 1965 as compared with \$8,809,600 last year. The funds assigned in Michigan last year allowed the start of 22 construction projects, completion of 14, and planning for 40 more.

Federal funds are allotted to states each year for projects such as nursing schools, county and

local hospitals, psychiatric facilities and child guidance clinics. A plan for use of the 1965 funds was drawn by the Health Department on the basis of a statewide survey of existing facilities.

This survey showed Michigan is in relatively good shape in one area of hospital care, but sharply lacking in another, said Heustis.

The plan indicated 82.5 percent of needed acute care facilities are presently available in Michigan, but only 51.5 percent of the necessary long-term care institutions are now in use, he said.

Chancellor Anton Nielsen appointed George Atkinson as a member of the village council at Monday night's Council meeting. Atkinson takes the place vacated

by Nielsen when he became president. His appointment is for one year.

"The Easter seal literally lends a helping hand to crippled children," Paul F. Niehaus, president of the Michigan Society for Crippled Children and Adults, Inc., declared today as the 18th annual Easter Seal campaign went into its last days. Niehaus pointed out that there are 8,000,000 crippled children in the United States today, of which a number are in this community.

Chancellor Anton Nielsen appointed George Atkinson as a member of the village council at Monday night's Council meeting. Atkinson takes the place vacated

by Nielsen when he became president. His appointment is for one year.

"The Easter seal literally lends a helping hand to crippled children," Paul F. Niehaus, president of the Michigan Society for Crippled Children and Adults, Inc., declared today as the 18th annual Easter Seal campaign went into its last days. Niehaus pointed out that there are 8,000,000 crippled children in the United States today, of which a number are in this community.

Chancellor Anton Nielsen appointed George Atkinson as a member of the village council at Monday night's Council meeting. Atkinson takes the place vacated

by Nielsen when he became president. His appointment is for one year.

"The Easter seal literally lends a helping hand to crippled children," Paul F. Niehaus, president of the Michigan Society for Crippled Children and Adults, Inc., declared today as the 18th annual Easter Seal campaign went into its last days. Niehaus pointed out that there are 8,000,000 crippled children in the United States today, of which a number are in this community.

Chancellor Anton Nielsen appointed George Atkinson as a member of the village council at Monday night's Council meeting. Atkinson takes the place vacated

by Nielsen when he became president. His appointment is for one year.

"The Easter seal literally lends a helping hand to crippled children," Paul F. Niehaus, president of the Michigan Society for Crippled Children and Adults, Inc., declared today as the 18th annual Easter Seal campaign went into its last days. Niehaus pointed out that there are 8,000,000 crippled children in the United States today, of which a number are in this community.

Chancellor Anton Nielsen appointed George Atkinson as a member of the village council at Monday night's Council meeting. Atkinson takes the place vacated

by Nielsen when he became president. His appointment is for one year.

"The Easter seal literally lends a helping hand to crippled children," Paul F. Niehaus, president of the Michigan Society for Crippled Children and Adults, Inc., declared today as the 18th annual Easter Seal campaign went into its last days. Niehaus pointed out that there are 8,000,000 crippled children in the United States today, of which a number are in this community.

Chancellor Anton Nielsen appointed George Atkinson as a member of the village council at Monday night's Council meeting. Atkinson takes the place vacated

by Nielsen when he became president. His appointment is for one year.

"The Easter seal literally lends a helping hand to crippled children," Paul F. Niehaus, president of the Michigan Society for Crippled Children and Adults, Inc., declared today as the 18th annual Easter Seal campaign went into its last days. Niehaus pointed out that there are 8,000,000 crippled children in the United States today, of which a number are in this community.

Chancellor Anton Nielsen appointed George Atkinson as a member of the village council at Monday night's Council meeting. Atkinson takes the place vacated

by Nielsen when he became president. His appointment is for one year.

"The Easter seal literally lends a helping hand to crippled children," Paul F. Niehaus, president of the Michigan Society for Crippled Children and Adults, Inc., declared today as the 18th annual Easter Seal campaign went into its last days. Niehaus pointed out that there are 8,000,000 crippled children in the United States today, of which a number are in this community.

Chancellor Anton Nielsen appointed George Atkinson as a member of the village council at Monday night's Council meeting. Atkinson takes the place vacated

by Nielsen when he became president. His appointment is for one year.

"The Easter seal literally lends a helping hand to crippled children," Paul F. Niehaus, president of the Michigan Society for Crippled Children and Adults, Inc., declared today as the 18th annual Easter Seal campaign went into its last days. Niehaus pointed out that there are 8,000,000 crippled children in the United States today, of which a number are in this community.

Chancellor Anton Nielsen appointed George Atkinson as a member of the village council at Monday night's Council meeting. Atkinson takes the place vacated

by Nielsen when he became president. His appointment is for one year.

"The Easter seal literally lends a helping hand to crippled children," Paul F. Niehaus, president of the Michigan Society for Crippled Children and Adults, Inc., declared today as the 18th annual Easter Seal campaign went into its last days. Niehaus pointed out that there are 8,000,000 crippled children in the United States today, of which a number are in this community.

Chancellor Anton Nielsen appointed George Atkinson as a member of the village council at Monday night's Council meeting. Atkinson takes the place vacated

JUST REMINISCING

Items Taken from the Files of The Chelsea Standard

4 Years Ago...

Thursday, March 23, 1961

Chelsea Police Chief John Palmer received a meritorious citation from Herbert J. McKune Post No. 31, American Legion, at the Legion Home Saturday night. The presentation was made by Post Commander William Blaes, who said the citation was "on behalf of the young people who have received immeasurable assistance from Chief Palmer in coping with the complex problems facing them in the world today." The presentation took place during the Legion's birthday party.

Charles Koehn, Chelsea High school senior, received the State Farmer Award from the Michigan Future Farmers of America Association last night as part of the 33rd annual state convention at Michigan State University, East Lansing. The degree was conferred on 214 Future Farmers with outstanding programs in farming and leadership. For three years Koehn's farming programs have included raising dairy, beef, corn, oats, wheat and alfalfa hay.

Katrine Gail, 16-year-old daughter of the Albert Galls of 6174 Willow Rd., Saline, became the 1961 Washtenaw county Dairy Princess at the annual Dairy Banquet at Saline High school Saturday evening. The new "princess" has been active in 4-H club work for six years. At the 1960 Washtenaw county 4-H club show, she won top showmanship honors and also exhibited the grand champion aged cow.

Chelsea's 60-member Junior High school Band journeyed to Belleville last Saturday to participate in their District Festival. Judges were lavish in their praise of the young musicians and were unanimous in awarding a First Division rating to the local group. The first division rating achieved entitles the band to participate in the State Festival to be held in Grand Rapids on April 29.

14 Years Ago...

Thursday, March 22, 1951

All churches in the community are holding special services this week and have made special plans for the Easter services to be held Sunday.

Village President Anton Nielsen appointed George Atkinson as a member of the village council at Monday night's Council meeting. Atkinson takes the place vacated

by Nielsen when he became president. His appointment is for one year.

"The Easter seal literally lends a helping hand to crippled children," Paul F. Niehaus, president of the Michigan Society for Crippled Children and Adults, Inc., declared today as the 18th annual Easter Seal campaign went into its last days. Niehaus pointed out that there are 8,000,000 crippled children in the United States today, of which a number are in this community.

Chancellor Anton Nielsen appointed George Atkinson as a member of the village council at Monday night's Council meeting. Atkinson takes the place vacated

by Nielsen when he became president. His appointment is for one year.

"The Easter seal literally lends a helping hand to crippled children," Paul F. Niehaus, president of the Michigan Society for Crippled Children and Adults, Inc., declared today as the 18th annual Easter Seal campaign went into its last days. Niehaus pointed out that there are 8,000,000 crippled children in the United States today, of which a number are in this community.

Chancellor Anton Nielsen appointed George Atkinson as a member of the village council at Monday night's Council meeting. Atkinson takes the place vacated

by Nielsen when he became president. His appointment is for one year.

"The Easter seal literally lends a helping hand to crippled children," Paul F. Niehaus, president of the Michigan Society for Crippled Children and Adults, Inc., declared today as the 18th annual Easter Seal campaign went into its last days. Niehaus pointed out that there are 8,000,000 crippled children in the United States today, of which a number are in this community.

Chancellor Anton Nielsen appointed George Atkinson as a member of the village council at Monday night's Council meeting. Atkinson takes the place vacated

by Nielsen when he became president. His appointment is for one year.

"The Easter seal literally lends a helping hand to crippled children," Paul F. Niehaus, president of the Michigan Society for Crippled Children and Adults, Inc., declared today as the 18th annual Easter Seal campaign went into its last days. Niehaus pointed out that there are 8,000,000 crippled children in the United States today, of which a number are in this community.

Chancellor Anton Nielsen appointed George Atkinson as a member of the village council at Monday night's Council meeting. Atkinson takes the place vacated

by Nielsen when he became president. His appointment is for one year.

"The Easter seal literally lends a helping hand to crippled children," Paul F. Niehaus, president of the Michigan Society for Crippled Children and Adults, Inc., declared today as the 18th annual Easter Seal campaign went into its last days. Niehaus pointed out that there are 8,000,000 crippled children in the United States today, of which a number are in this community.

Chancellor Anton Nielsen appointed George Atkinson as a member of the village council at Monday night's Council meeting. Atkinson takes the place vacated

by Nielsen when he became president. His appointment is for one year.

"The Easter seal literally lends a helping hand to crippled children," Paul F. Niehaus, president of the Michigan Society for Crippled Children and Adults, Inc., declared today as the 18th annual Easter Seal campaign went into its last days. Niehaus pointed out that there are 8,000,000 crippled children in the United States today, of which a number are in this community.

Chancellor Anton Nielsen appointed George Atkinson as a member of the village council at Monday night's Council meeting. Atkinson takes the place vacated

by Nielsen when he became president. His appointment is for one year.

"The Easter seal literally lends a helping hand to crippled children," Paul F. Niehaus, president of the Michigan Society for Crippled Children and Adults, Inc., declared today as the 18th annual Easter Seal campaign went into its last days. Niehaus pointed out that there are 8,000,000 crippled children in the United States today, of which a number are in this community.

Chancellor Anton Nielsen appointed George Atkinson as a member of the village council at Monday night's Council meeting. Atkinson takes the place vacated

by Nielsen when he became president. His appointment is for one year.

"The Easter seal literally lends a helping hand to crippled children," Paul F. Niehaus, president of the Michigan Society for Crippled Children and Adults, Inc., declared today as the 18th annual Easter Seal campaign went into its last days. Niehaus pointed out that there are 8,000,000 crippled children in the United States today, of which a number are in this community.

Chancellor Anton Nielsen appointed George Atkinson as a member of the village council at Monday night's Council meeting. Atkinson takes the place vacated

by Nielsen when he became president. His appointment is for one year.

"The Easter seal literally lends a helping hand to crippled children," Paul F. Niehaus, president of the Michigan Society for Crippled Children and Adults, Inc., declared today as the 18th annual Easter Seal campaign went into its last days. Niehaus pointed out that there are 8,000,000 crippled children in the United States today, of which a number are in this community.

Chancellor Anton Nielsen appointed George Atkinson as a member of the village council at Monday night's Council meeting. Atkinson takes the place vacated

by Nielsen when he became president. His appointment is for one year.

"The Easter seal literally lends a helping hand to crippled children," Paul F. Niehaus, president of the Michigan Society for Crippled Children and Adults, Inc., declared today as the 18th annual Easter Seal campaign went into its last days. Niehaus pointed out that there are 8,000,000 crippled children in the United States today, of which a number are in this community.

Chancellor Anton Nielsen appointed George Atkinson as a member of the village council at Monday night's Council meeting. Atkinson takes the place vacated

Troublesome Thoughts Nag School Board

Some troublesome thoughts nagged at the board of education, held during the public forum Tuesday night and at its official business session which convened immediately afterward. Some were brought up by the 200 citizens who braved the unusual "spring" weather to attend the meeting, some by board members themselves.

School district population is up since 1950, from 6,300 to 9,000, Board Member Paul Watson pointed out, adding that the school census in the same period had climbed from 2,352 to 2,384.

Continued development of the Lanswood subdivision has added both valuation and pupils, while the in-progress expansion of the Chrysler Proving Grounds may well bring several hundred more children into the school. Board President Luther Kusterer told the group in his introductory remarks.

The Health Department recommends one of two alternatives for the junior high school building: abandon it, or replace it, this was in a letter read to the group by Dr. Clare Warren, board member.

We may expect some staggered classes, with different groups going to school at different hours next fall, in order to prevent half-day classes in the high school. Superintendent Charles Cameron reported.

These are some of the reasons why the Board put itself on record and started the wheels in motion for erection of a new junior high and the necessary additions to the high and elementary schools. It is of course recognized that, though planning and designing work will begin immediately, that it may be three years or more before the construction program is completed.

Comments overheard at the public meeting were many and varied. Some of them were as follows: "The junior high is a firetrap. Let's get out of that thing before something terrible happens." "Every one's afraid of the junior high."

"People want a firm program instead of a piecemeal approach. The Board should consider a complete building program."

"Ability to pay the relatively small tax increase involved is a problem, in most cases."

The art of living is said to be the process of getting along with people you do not like.

MONEY TROUBLE?
 ONE PLACE TO PAY!
Credit Management Service
 662-2565
 342 Municipal Court Bldg.
 Ann Arbor
 State Licensed and Bonded

CHEVELLE by Chevrolet

No other car of its size offers more

- 4 protective steel inner fenders
- keyless locking doors
- curved side windows
- separate body and frame units
- a 9-step acrylic lacquer finish
- a battery-saving Delcotron generator
- flush-and-dry rocker panels
- a four-position ignition switch
- self-adjusting brakes
- a Full Coil suspension system
- bonded brake linings



Chevelle Malibu Sport Coupe

No matter how you look at it, this car makes a lot of sense.

If you're interested in value (and who isn't), the eleven features above give you a good idea why more intermediate-size car buyers are thinking Chevelle.

If you're looking for a wide power choice, Chevelle starts out with a standard 120-hp Six, an ideal city performer. After that you may order from a variety of engines that turn it into an even greater highway performer.

Room? Large door openings. Wide

curved side windows for extra shoulder room. Great front and rear leg room. Those four, five or six passengers have it made. And so do you. Chevelle may seat like a big car but it handles like a smaller car.

Comfort? Thick wall-to-wall carpeting in Malibu models. Foam-cushioned seats. Easy-to-read instrument panel. The whole interior looks like those in cars costing far more.

Come on down to our showroom and take a drive soon. Chevelle begins to make even more sense after you've gone a couple of miles.

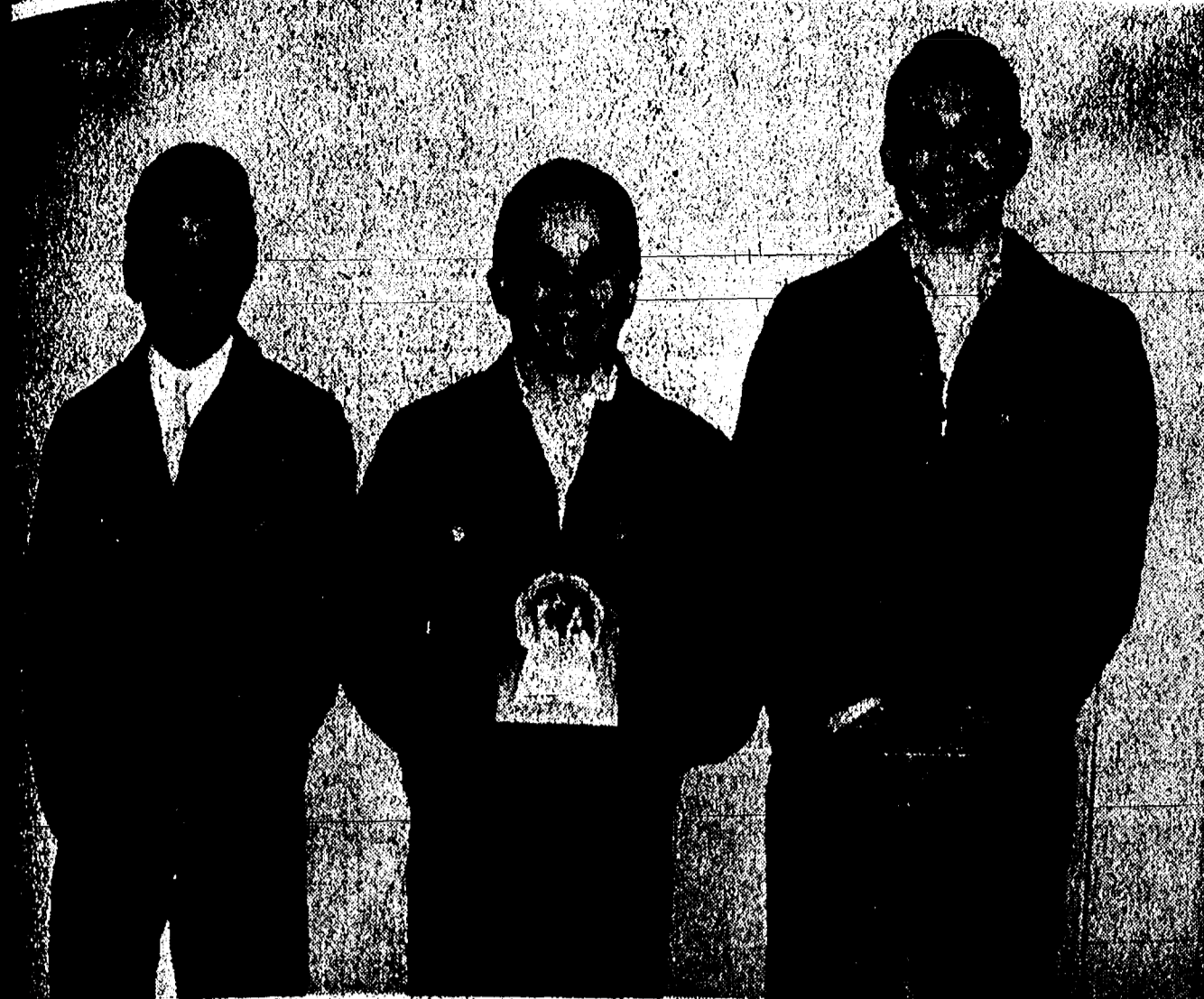
Drive something really new—discover the difference at your Chevrolet dealer's
Chevrolet • Chevelle • Chevy II • Corvair • Corvette

SPAULDING CHEVROLET SALES & SERVICE
 Chelsea, Michigan

21-1494

some
ts Nag
Board

e thoughts na
education, bu
forum Tuesd
official busin
vened. Immed
ne were br
eta who br
ig" weather
some by bo
s.
population is
3,800 to nea
er. Paul Ma
that the sch
me period h
to 2,884.
pment of id
ion has add
l pupils, wh
pansion of
Grounds ma
hundred-mo
school. But
uster told
ctory remark
artment recom
alternatives
chool building
ce it, this wa
the group b
board memb
some stagge
ent groups
different hou
o prevent h
e high scho
aries. Camer
of the reaso
itself on reco
feels in m
ing junior h
additions to
ry schools.
ed that, thou
ning work wa
that it may
before the en
ogram is com
ard at the pu
ny and vari
as follows:
is a fire
it thing bef
happens."
d of the ju
firm program
neal approa
onsider a com
ram."
the relative
involved is
ases."
is said to
ng, along with
ike.
EY
LE?
TO PAY
gement
e
15
ourt Bldg.
or
id Bonded



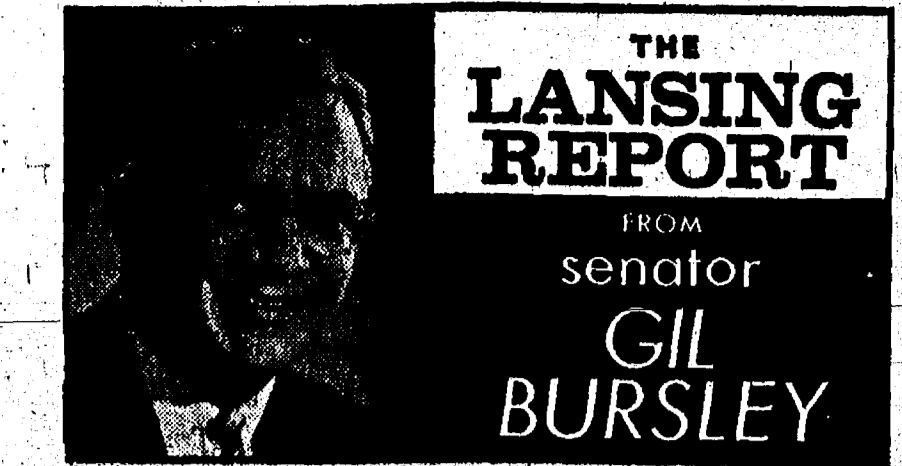
CHAMPION CORN GROWERS: Three FFA members received pins and a plaque at a banquet at the Holiday Inn, Jackson, last Thursday in honor of the corn growing projects who made the best record on a corn growing analysis sheet supplied by the FFA. Doug Young, center, received the plaque he holds for the top student from Chelsea on a total score of 99. Jim Bristle, left, and Dave Clark received pins and certificates for adequate records. Dave Clark had the lowest cost per bushel of corn, after harvest, at 70 cents.

Chelsea FFA Members Earn Corn Growing Awards

Three FFA members attended a banquet at the Holiday Inn in Jackson, Thursday, March 18. The banquet was in honor of the top students in the county who made the best record on a corn growing analysis sheet supplied by the FFA. Doug Young, center, received the plaque he holds for the top student from Chelsea on a total score of 99. Jim Bristle, left, and Dave Clark received pins and certificates for adequate records. Dave Clark had the lowest cost per bushel of corn, after harvest, at 70 cents.

Kiwanis Birthday ...

(Continued from page one)
Gov. of Division VI, of Belleville, to Louis W. Allen and Walter R. Zeeb for 50 meetings; Paul G. Schaeble, Jr., and J. Raymond Steinbach for 100 meetings; John Detling and Don Turner for 200 meetings; Floyd P. Fowler and Wallace Wood, 250 meetings; Chandler Rogers, 450 meetings; Leo Bishop, 500 meetings; Luther Kusterer, 550 meetings; William Collins, 600 meetings; James Liebeck, 650 meetings; Robert Foster, 850 meetings; James Daniels and Anton Nielsen, 900 meetings; Parker Sharrard, 1,000 meetings; Thomas Smith, 1,150 meetings; the Rev. Edwin J. Weiss, 1,200 meetings; and Paul F. Niehaus, 41 years, 2,132 meetings.



THE LANSING REPORT
FROM
senator
GIL BURSLEY

One of the greatest satisfactions a legislator receives is to share in developing constructive legislation, to nurse it through the parliamentary stages and then to see that it is actually implemented and does the good originally intended.

For two years I have been closely associated with legislation that would enable our water and river resources to be more effectively utilized. Last year I sponsored Public Act 253 known also as the Local River Management Act. Many persons devoted considerable thought and time to this bill before it was finally enacted.

This week it is my understanding that a Huron River Watershed Council will be established under the new legislation by approval of the Michigan Water Resources Commission. This body will supplant the former voluntary association known as the Huron River Intergovernmental Watershed Committee. Participating governments include Ann Arbor, Esplanade, Belleville, Chelsea, Dexter, Washenaw county, Livingston county, Berlin township (Monroe county), West Bloomfield township (Oakland county), Van Buren township (Wayne county) and from Washtenaw county the following townships, Lima, Scio, Superior and Webster.

Under P.A. 253 a watershed council may do many things including studies of the water resources of the watershed, requesting the State Water Resources Commission to conduct surveys of stream flow, make periodic recommendations and reports, advise agencies of federal, state and local governments, cooperate with federal and state agencies in providing stream gauges, water quality sampling stations and perhaps most important recommend the creation of a river management district which could impound waters, contract with the federal government and in substance would be authorized to act as a body corporate with the powers to sue and be sued, exercise the right of eminent domain and apportion administrative costs among the participating governments.

The River Raisin watershed is just as interested as any other area in solving its many water management problems. For a long period under the able leadership of Tecumseh Mayor Harold Easton, Drain Commissioner Don Mitchell and others in Clinton, Manchester, Blissfield, Adrian, Dundee and the various townships and county governments involved a very considerable amount of work has been accomplished. The River Raisin Watershed Association was following a course to qualify for financial help from the U. S. Department of Agriculture Soil Conservation Service under Public Law 566. The Federal Government has just said the River Raisin doesn't meet the necessary technical requirements to qualify for such a grant.

I discussed this subject at length in Lansing last week with Lawrence Oeming and Norman Billings of the Water Resources Commission and it was their considered recommendation that the River Raisin utilize the same state legislation as has the Huron River and apply for the establishment of a River Raisin Watershed Council under P.A. 253. I strongly urge this possibility be carefully explored.

The hundreds of hours of study and work conducted by Mayor Easton and his associates, their

About Your Social Security

Employers who have automated payroll systems may cut down the amount of clerical work required for making quarterly reports to the Social Security Administration by using magnetic tape instead of Form 941. The Social Security Administration is glad to receive reports on magnetic tape from employers of any size. Magnetic tape reports are simple and flexible, and the procedures are designed for easy adaptability to the employer's accounting system. The employer need not submit a list of the individual earnings report to the District Director of Internal Revenue Service. Instead, the earnings reports may be submitted directly to the Social Security Administration on magnetic tape. Upon receipt, the tape is processed and a detailed list or microfilm, whichever the employer chooses, is prepared and sent to him, along with the original reels of tape, within a month.

More than one employer identification number may be reported on the same reel of tape, although the earnings records for each employer must be grouped together on the tape.

Robert A. Kehoe, social security district manager in Ann Arbor, says that any employer should feel free to ask for "Specifications for Reporting Social Security Earnings Data on Magnetic Tape" from Joseph L. Fay, Director, Division of Accounting Operations, Baltimore Md. 21235.

Deadline Is Friday For Feed Grain Program Sign-up

Friday, March 26, is the last day growers may file applications to take part in the 1965 feed grain program. Earl Dolezky, chairman, Agricultural Stabilization and Conservation County Committee, said today.

He reminded farmers that only those who participate in the feed grain program will be eligible for price support on their 1965 corn, barley, and grain sorghum crops. As last year, the support is made available through loans and price-support payments.

Besides qualifying for price support, the participating grower also earns a diversion payment for shifting part of his feed grain base to a conserving use. Minimum diversion is 20 percent of the individual farm's total feed grain base. Maximum diversion is 50 percent of the base or 25 acres if this is more. For diverting more than the minimum, the diversion payment will be figured at a higher rate. If the actual diversion is 40 percent or more, the higher rate applies to the entire diversion.

The chairman reports that farmer interest in the State is higher than last year. Indications are that 1965 participants will run well ahead of the 1964 feed grain program.

He urges farmers who are interested in taking part in this year's program to call at their ASCS county office as soon as possible, since there are only two working days left before the March 26 sign-up deadline, and signing up is the first step in program participation.

"We don't want anybody to be disappointed because he waited too long," the chairman said. "There's also the advantage of being able to get half of the estimated diversion payment within a few days after signing an application."

The ASCS county office will be open from 8 a.m. to 3:30 p.m. through Friday.

CRISIS NOT HOPELESS
Secretary of Defense Robert S. McNamara states that the present situation in Vietnam is grave but not hopeless. He said the outcome in S. Vietnam is the key to stemming Communist expansion throughout strategic Southeast Asia and other areas.

Telephone Your Club News To GR 5-3581

NOTICE

ANNUAL TOWNSHIP MEETING

NOTICE IS HEREBY GIVEN,
That the next Annual Township Meeting of the Electors of the

TOWNSHIP OF SYLVAN

County of Washtenaw, State of Michigan
will be held at

Sylvan Township Hall

Beginning at 1:00 o'clock P.M., Eastern Standard Time on

Saturday, April 3, 1965

Signed: DANIEL MURPHY
Township Clerk.

Dated: March 15, 1965.

beautiful spring blouses

Get down to basics, beautifully, with our softly tailored blouses. Or get all ruffled up, the pretty way, in our feminine, ruffle-touched styles. Choose now.

MAC SHORE
NEW ERA
LAURA MAE
LIFE

MOTHER'S DAY SPECIAL

Your Choice
GIANT SIZE
11" X 14" or 8" X 10"
PORTRAIT
OF YOUR CHILD
Only 79¢
Plus 50¢ Mailing and Handling Charge

Groups: \$1.00 extra per child.

ONLY 1 OFFER PER FAMILY

Additional prints may be ordered at reasonable prices.

NO OBLIGATION
NO AGE LIMIT

EXTRA BONUS - PHOTOGRAPHY BY "LEE"

One of Michigan's Finest in the portraiture of babies and children.

2 DAYS ONLY MARCH 26th and 27th

HOURS: 10:00 a.m. till 6:00 p.m.

DANCER'S

CHELSEA.

WANT TO TAME TIGERS? JOIN THE DODGE BOYS '65ers BRIGADE NOW!

Step up. Join the '65ers Brigade and move out with the real thing in performance. With Dodge, it's in your power to break away: tame tigers, bridle mustangs, outrun impulses, free wildcats, squash spiders. And capture a pocketful of savings. Step up. Move out. Break away. Join the brigade of buyers switching to Dodge, today. Long-gone Dodge Polara, shown. Long on power, long on looks and wheelbase and never before so beautifully priced.

Back up for savings at
BRIGADE HEADQUARTERS

G. A. SALES & SERVICE
1185 CHELSEA-MANCHESTER ROAD
CHELSEA, MICHIGAN

THE DODGE BOYS

Just
Phone
GR 5-3581

BUY SELL TRADE RENT HIRE HELP

Ads
Taken
Till 5 p.m.
Tuesday

WANT ADS

The Chelsea Standard

WANT AD RATES

PAID IN ADVANCE—All regular advertisements, 30 cents for 25 words or less, each insertion. Count each word as a word. For more than 25 words add 2 cents per word for each insertion. "Blind" ads or box number ads, 50 cents extra per insertion. CHARGE RATES—Same as cash in advance, with 10 cents bookkeeping charge if not paid before 5 p.m. Tuesday preceding publication. Pay in advance, send cash or stamps and save 15 cents. CARDS OF THANKS or MEMORIALS—Single paragraph ads, \$1.00 per insertion for 50 words or less; 2 cents per word beyond 50 words. Minimum, 1 inch. DISPLAY WANT ADS—Rate, \$1.10 per column inch, single column width only; 5-point and 10-point light type only. No borders or boldface type. COPY DEADLINE—6 p.m. Tuesday week of publication.

WANTED — House to rent in country by young couple with child. Can give reference. Write to Mel Cotton, P.O. Box 313, Chelsea, Mich. Ph. 475-8034. -39tf

KEEP carpet cleaning problems small—use Blue Lustre wall to wall. Rent electric shampooer \$1. Chelsea Hardware. Phone GR 9-5911.

Farm For Sale

Half way between Chelsea and Dexter, 119 acres with 10-room modern house, full basement, new L.P. gas furnace, 22 acres wheat, several acres new seedling—small barn, silo, granary, milk house, double corn crib. Farm all on one side of road. Call—

Kern Real Estate
616 South Main, Chelsea
Phone 475-8563 -39tf

ROMINE DAIRY BAR newly redecorated. Hours, starting Monday, March 29: Monday through Thursday, 6 a.m. to 9 p.m.; Friday and Saturday, 6 a.m. to 10 p.m.; Sunday, 9 a.m. to 9 p.m. -40

CORN CLINIC at Zion Lutheran church, Rogers Corners, postponed to Tuesday, March 30, at 8 p.m. Sponsored by Standard Oil Division, George Knickerbocker, Agent. -39

G. G. HOPPER

Painting & Decorating
Building Contractors
Phone GR 5-5581
Gregory 498-2148 -74tf

SOME PEOPLE wash their car in their Sunday best. At SOF SPRAY Carwash, 1188 S. Main (Next to Chelsea Lanes). -39

FOR SALE — Two miniature poodles, black. Female, three years old, registered, AKC. Male puppy, three months old, unregistered. Very reasonable. GR 5-8423. -39

We Try HARDER

to give you better value, for your used car dollar. You can tell a BUICK DOUBLE CHECKER-USED CAR is a better value as soon as you drive it—so why don't you?

'63 Buick LeSabre 2-dr. HT \$2195
'63 Buick LeSabre 4-dr. HT \$2195
'63 Olds P-85 4-dr. air conditioned \$1795
'62 Chev V-8 Impala 4-dr. HT, air-conditioned \$1695
'62 Olds 4-dr. HT \$1695
'62 Chev Bel Air 4-dr. \$1195
'62 VW Bus \$1295
'62 Ford Galaxie \$1095
'60 Rambler 4-dr. \$495
'60 Ford Pick-Up \$445
'58 Pontiac 4-dr. HT \$655
'57 Chev Bel Air 4-dr. \$295

Stop by real soon where you see the double check sign... it means savings and satisfaction.

Open Friday till 9 p.m.

Daniels Motor Sales
BUICK & OLDS
118 N. Main St.
Ph. GR 9-0731 Chelsea, Mich. -39

WANT ADS

BAR MAID and part-time waitresses wanted. References required. Call 426-4160 or HA 6-8181. -39

FOR SALE—Pony pony cart and harness. Ph. GR 5-8143. -39

NOTICE—I will not be responsible for any debts contracted for by anyone other than myself. Thomas William Harris. -40

GAMBLES TYPEWRITER RENTAL

Rent a standard office typewriter now by the day, week or month.

1 to 3 days \$3.00
1 Week \$4.75
1 Month \$8.50

Gambles

GR 9-2311 -39

FOR SALE—1963 Ford 100 pickup. Excellent condition. Radio, low mileage. 428-8571. -39tf

BUD GUEST PRESENTS—Come in and hear the voice of Bud Guest present our complete building program on film. If you are going to build, see plans for 17 different models; 2, 3, or 4 bedrooms; 1, 1½, or 2 baths; basement and garage, if desired. All you need is a building site and \$50 down. NO CLOSING COSTS. We will build for you and furnish mortgage money. Make appointment for complete presentation. Call Mary Wolter, broke Dexter 428-8188. -39

BULLDOZING

Grading & Land Clearing

DICK KISS

6946 Werkner Rd. Chelsea, Mich.
Phone 475-8446
If no answer call 479-2791 -24tf

FOR SALE — 62-gal. Lochinvar electric, glass-lined, water heater. \$50. Good condition. Ph. 479-7408. -40

WANTED — Typist-clerk. Summer, full-time, winter, part-time. Ph. 475-8307 between 8 a.m. and 5 p.m. weekdays only. -39

For the Best in

POLE BUILDINGS

Be sure to see "SMILEY" Call or Write

JOHN LIVERMORE

Gregory, Alpine 6-2827 -39tf

FOR SALE — Lots in scenic North Heights, near Half Moon Lake. Septic approved. 160' x 285'. Trees. Chelsea School District. Also 4 bedrooms, 2-bath Cape Cod with look-through fireplace. Builder's home. E. A. Wigle, Phone Chelsea 479-4471. -40

WANTED—Baby sitting in my home. 475-7181. -40

WANTED—Automobile mechanic. Daniel Motor Sales. Ph. GR 9-6731. -39tf

Real Estate For Sale

NEW LISTING—Large new country home, 3 bedrooms, 1½ baths, fireplace, built-in range, oven and dishwasher. 2-car basement garage. \$20,500.

TWO MILES EAST on Old US-12. 2 acres with neat 2-bedroom house, 1½-car garage. \$13,500.

TWO FAMILY—Two large well-maintained units. Live-in one, rent the other. Let me show you the income tax advantage of owning a two-family home.

LOTS OF CLOSETS—2 bedrooms, new carpeting in living room and dining room. Basement. Screened porch. 1½-car garage. \$19,500. Low down payment on FHA.

BUILDING LOTS:
3 in town from \$1,500 to \$1,850.
2 in the country, b.t. road \$1,650.

LISTINGS NEEDED—Call me.

CLARENCE WOOD

BROKER
646 Flanders St.
Phone GR 9-4603 -40

WANT ADS

FOR SALE — First communion dress, size 10, nylon with satin slip, \$9. Originally \$14. Easter dress, yellow nylon with slip, size 8, \$5. Ph. 479-8382. -39

WANTED — Light trucking by job or hour. Call after 5. 426-4429. -2

FOR SALE—June Clover seed. Paul Seitz & Sons. Ph. 475-5115. -39tf

\$2000 IN CLOTHING samples furnished to full-time direct or party plan salespeople who qualify. Smaller line to part-timers. For details on selling the famous Fashion Wagon line, write Minneapolis Woolen, Duluth, Minn. Include your phone number. -39

FORD CORNER

ORCHARD AND MAIN
CHELSEA'S LARGEST
AND FINEST SELECTION
OF USED CARS AND
TRUCKS

Late Model Like New

1964 Chevy II 4-dr. \$1,095.00
6-cylinder, standard shift.
1964 Plymouth Barracuda \$2,395.00
8,000 miles
1964 Ford Galaxie 500 4-dr. \$2,595.00
Demonstrator
1964 Fairlane 2-dr. \$1,795.00
New car warranty
1964 Falcon 2-dr. \$1,795.00
Just like new
1963 Dodge 4-dr. Hardtop \$1,795.00
Extra clean.
1963 Chevrolet 4-dr. \$1,695.00
V-8, automatic transmission

Medium Priced Values

1962 Fairlane 2-dr. \$1,095.00
Low mileage
1962 Galaxie 500 2-dr. \$1,395.00
Beautiful chestnut color
1962 Galaxie 4-dr. \$1,395.00
V-8, standard transmission
1962 Pontiac 4-dr. H.T. \$1,595.00
A real value
1962 Ford Galaxie 500 2-dr. \$1,395.00
V-8, automatic transmission
1961 Ford Galaxie Conv. \$1,195.00
Exceptionally clean
1961 Corvair Monza \$1,095.00
4-speed transmission
1959 Thunderbird Conv. \$1,195.00
A beautiful automobile

No Money Down Bargains

1960 Corvair 4-dr. \$27.00 per mo.
Standard transmission
1959 Buick 4-dr. \$27.00 per mo.
A beautiful car
1957 Pontiac 4-dr. \$5.00 per mo.
Runs good
1957 Chevrolet 4-dr. \$21.00 per mo.
V-8, Sharp
1955 Ford 2-dr. \$50.00
Runs good.

Our Lots Are Full of New and Used Cars — So Stop and Look at Your Leisure or Call

Lyle Christwell, Everett Johnson, or George Palmer for information and prices.

GR 5-3271
GR 5-8549
GR 9-3041
GR 5-8531

PALMER FORD

50-Year Dealer
ROMINE DAIRY BAR newly redecorated. Hours, starting Monday, March 29: Monday through Thursday, 6 a.m. to 9 p.m.; Friday and Saturday, 6 a.m. to 10 p.m.; Sunday, 9 a.m. to 9 p.m. -40

CORN CLINIC at Zion Lutheran church, Rogers Corners, postponed to Tuesday, March 30, at 8 p.m. Sponsored by Standard Oil Division, George Knickerbocker, Agent. -39

PUREBRED Arabian Stallion

At service to a limited number of mares. Ghallie's Prince, AHOR No. 21273. Six registered half-Arabian foals in 1965. Visitors welcome.

SHERI-RICH FARMS

Shirley and Richard Carlson
18500 Burtless Rd. Manchester
Phone GA 4-444 -39

LAWNMOVERS, Tillers and Rides, small engine repair, parts, service. Free pick-up and delivery. Chelsea Mower Shop, S. Main and Old US-12. Ph. 475-7235. -39tf

MORTON EXCAVATING, trenching, driveways. Fill dirt. Top soils. We specialize in septic tank and drainage installation. Free estimates. Phone Pinckney 875-8619. -39

5½% FARM LOANS

Federal Land Bank Association
Call Ann Arbor NO 5-6189 -50tf



"If that's the police, tell 'em to have that garage in the Standard Want Ads fill their car—and send you the bill!"

WANT ADS

RUST PREVENTER—SOFSPRAY Coin-op Carwash, 1188 S. Main St. (Next to Chelsea Lanes). -39

WANTED — Wool. Gus Leunberg, HA 6-8154. -40

FOR SALE—128 Wilkinson St. 5 rooms, full basement, gas heat, one-car garage. May be purchased on land contract. Shown by appointment only. Ph. Dick Fahey, GR 9-4861, James Fahey, GA 8-8348, John B. Fahey, broker, 155 Fahey Rd., Manchester. -40

FOR RENT — Unfurnished 2-bedroom, utility room, downstairs apartment. Ph. GR 5-8763 after 6 p.m. -39tf

CLOGGED SEWER

Reynolds Sewer Service
We Clean Sewers Without Digging
Drains Cleaned Electrically
FREE ESTIMATES
2-YEAR GUARANTEE
Phone Ann Arbor NO 2-5277
Sewer Clearing Is Our Business—Not a Side-Line. -39tf

BE YOUR OWN BOSS. Home delivery milk route for sale in Chelsea area. For more information write Box MA-25, Chelsea Standard. -40

FOR RENT — Unfurnished house, 1½ miles east of Chelsea, 1 bedroom. \$35 per mo. Call 475-8768. -39tf

LOT OWNERS!

\$50 DOWN
PUTS NEW HOME ON YOUR LOT
ANYWHERE IN MICHIGAN, OHIO, INDIANA. Monthly payment as low as \$48. 15-year mortgage, no closing costs added. 32 models, \$4750 to \$17,500. Built and financed by HOMESTEAD CORP., no divided responsibility. Beat spring rush, phone or see us now!

MARY WOLTER
7421 Dexter-Pinckney Rd., Dexter
Phone 426-8188 -39

WANT ADS

FOR SALE—Brown platform rocker, \$20; twin size box spring with Hollywood frame, \$20; old school writing chair, \$3; dresser with mirror, \$4; soldering gun, \$5. Call 475-8093. -39

HOMES-AND-FARMS in Stockbridge and Stockbridge area, 15 minutes from Chelsea, lower prices, several excellent buys. Ramsdell Real Estate, Stockbridge, Ph. 861-2675, Roland Cobb, salesman, Ph. 861-3945. -39

FOR INSURANCE

Call even. or week-ends
N. H. MILES
AGENT
GR 5-8334
ALLSTATE -39tf

QUADRUPLE YOUR MONEY! 25¢ to wash your car saves a dollar in depreciation. SOFSPRAY Carwash, 1188 S. Main (Next to Chelsea Lanes). -39

FOR SALE OR RENT — 10x57 Expandable mobile home, Chelsea Trailer Park, Rent, \$80 plus utilities. Call 484-1222, Lansing collect. -39tf

WANTED — Light trucking by job or hour. Call after 5. 326-4429. -2

FAST - CLEAN ALL - ELECTRIC

Wallpaper Steamer
For Rent
\$4.50 per day
Merkel Brothers -40

FOR TRACTORS and equipment. Also New Holland machinery. Sales and service. Cobb & Schreier, Stockbridge. Phone Ulysses 1-4526. -40

FIREPLACE WOOD for sale. We deliver. John A. Kiln. Phone 475-8858 or 479-2877. -39tf

FOR SALE—Cub Scout uniform, about size 10. White treadle sewing machine. Ph. GR 5-8290. -39

George's Shoe Repair Shop

2nd Floor above
Hilltop Plumbing, 106 Park St.
Half Sols & Heels
Monday through Friday
8 a.m. — 5 p.m.
Saturdays until noon. -14tf

- FOR SALE -

2 ACRES, and 5 rooms, bath; home located at 532 McKinley St., Chelsea.

160-ACRE FARM about 5 miles west of Chelsea. Excellent nearly new 3-bedroom house, large basement barn. About 50 acres of alfalfa. All-weather road. Chelsea schools.

2-APARTMENT HOUSE. Excellent income. Price: \$15,000, \$3,000 down.

5-BEDROOM COUNTRY HOME, garage, two acre lot. 12085 Old US-12 E. Price \$13,500.

2-BEDROOM modern Cavanaugh Lake cottage; oil furnace; good beach. Price \$9,000.00.

MODERN YEAR-ROUND Cavanaugh Lake home, in new condition. Oil furnace, basement recreation room, living room with fireplace, garage, 130-ft. frontage. Price \$16,800, \$4,000 down.

List your property with Miller—fast, efficient service.

R. D. MILLER

REAL ESTATE BROKER
EVELYN ABDON, Phone 479-4522 (after 6 p.m.)
Office: 15775 Cavanaugh Lake Road
Post Office Box 388 Chelsea, Michigan
Phone: GR 9-5892

WANT ADS

FOR SALE—Argus Cinemas 85E 8 mm. automatic power zoom movie camera. Must see to appreciate. Ph. 475-5721. -39

WE PAY the best prices for tin scrap and sheet metal. Huron Valley Steel Corp., 12451 Haggerty Rd., Belleville, Mich. Phone 941-3400. -39

Septic Tanks And Drain Fields

INSTALLED TO COUNTY CODE SPECIFICATIONS
Septic tanks from 300 gal. to 2,000 gal. available for prompt installation.

HILLTOP PLUMBING

BOB SHEARS
201 S. Main Phone 479-3851 -2tf

WILL CARE for children in my home. Ph. 475-8218. -39

FOR SALE—Beef by half or quarter. First cutting of hay. Ph. GR 5-8339. -39

REAL ESTATE FOR SALE

1½ miles out on 1 acre, 3-bedroom ranch type home.

11 acres with modern 2-bedroom home, barn.

A going dairy bar and lunch and baked goods, plus a beer and wine license to take out.

2-Bedroom Home, full basement, gas heat, modern kitchen.

LISTINGS NEEDED

Kern Real Estate
616 South Main St.
Phone 475-8563 -39tf

ROOM FOR RENT — Gentlemen preferred. 124 Lincoln GR 5-8146. -39

WANTED — Ironings, \$1.15 per hr. Ph. 479-4072. -39

WANTED TO RENT — 3- or 4-bedroom house in Chelsea area. Will consider lakes. Ph. 475-8532. -39tf

ANCHOR INN

11880 McGregor Rd.
PORTAGE LAKE - PINCKNEY
FOR BANQUETS AND PARTIES
Call HA 6-8183 or 426-4160 -37tf

HAY FOR SALE—First and second cutting alfalfa. Ph. 475-8190 or 479-3181. -37tf

TRAVEL TRAILERS—13-ft. and up; 10x65 ft. trailers. John R. Jones Trailer Sales, Gregory, Mich. Phone Alpine 6-2655. -43tf

For Sale

120 acres near Stockbridge. Owner very anxious to sell. Large 4- or 5-bedroom modern home. New oil furnace. 40 x 80 full basement barn. Extra good. 3 good poultry houses. Fairly good fences. 90 acres tillable. 10 acres tillable muck. Farm located on a main road, good location. Price has been reduced to \$22,000 because of ill health.

Other farms and small acreages.

Kirby Real Estate

Phone JU 9-8235
Leslie, Michigan -39

FREE ESTIMATE on outside painting now. Douglas Paint Co. Chelsea, Ph. 475-8072. -40

FOR REAL DOLLAR SAVINGS—Be sure and see us before you buy any new or used car. Palmer Motor Sales, Inc. Your Ford Dealer for over 50 years. -2tf

Interior Latex Paint

Sun-Glo Brand \$2.99 gal.
Charter House Brand \$3.95 gal.
Wheeler 348 Brand \$4.50 gal.
Naipek \$5.95 gal.
Lucite \$7.45 gal.

Merkel Brothers

LOSE WEIGHT safely and easily with new Dex-A-Diet table. Only 98c. Chelsea Drugs. -42

FOR SALE—3-bedroom home. Full basement, garage, 1½ lots. 5½% GI loan. \$11,600. 388 Elm St. Ph. 475-8173. -38tf

FOR SALE — Ironite. Ph. 475-8280 or 479-8301. -39

NOW IS THE TIME

Do not wait till your grass is high enough to bale before having your lawn mower serviced. Free pick-up and delivery.

Chelsea Mower Shop

Phone 475-7235
WANTED — Baby-sitting after school and week-ends. Phone GR 9-4293. -38

HELP WANTED

Men, 25 or over, for professional carpet cleaning service. Experienced or will train ambitious, dependable person. Apply between 4 and 5:30 p.m.

American Rug Cleaning Co.

1032 Green St.
Ann Arbor -39

WANT ADS

FOR SALE—1960 Studebaker Lark, V-8, 4-dr. sedan, automatic, special upholstery, radio, like brand new, no rust. Ph. GR9-6373. -38tf

USED TRACTOR TIRES—Large inventory on hand. Also used passenger truck - grader tires. Jackson Tire Brokers, 41-106, Munith, Mich. Ph. 695-2925. -38tf

MALE HELP WANTED — 18 to 30 years old. High school graduate, or equivalent. Minimum height five feet, seven inches, 150 pounds. Steady work. Paid vacation, holidays and personal hospitalization. See Mrs. White at Fortune Industries, 11770 Dexter-Chelsea Rd. -38tf

Send the Best — Send Hallmark

Hallmark Cards
Gift Wrapping,
Ribbons, Napkins,
Paper Plates

Complete line of Hallmark party goods.

Magic Mirror

Beauty Salon
6585 Jackson Road Ph. 605-0816 -39

CARD OF THANKS
I wish to thank all my friends and neighbors for the many cards, gifts and other acts of kindness while I was in the hospital and since my return home. It really helps to know your friends are with you when needed.

Ann Hoover.

CARD OF THANKS
We wish to express our appreciation to our friends and neighbors for their many kind expressions of sympathy and condolences during our recent bereavement. The Family of Roy C. Ives.

IN MEMORIAM—
In loving memory of our father, Lawrence L. McKune, who passed away five years ago, March 30. God knows how much we miss him. Never shall his memory fade. Loving thoughts shall ever wander To the spot where he is laid. Daughter and Husband.

CARD OF THANKS
We wish to thank all our relatives, neighbors and friends for their cards, flowers and gifts of food at the time of the sudden death of our wife and mother Mrs. Eleanor H. Blaznek. A special thanks to Mr. and Mrs. Louis Burghard.

ARCH 25, 1965
Ad
Taken
7:11 5 p.m.
Tuesday
Board
rs
ns
d, the Board
ra Tuesday
um meeting
ange of subje
were relevant
re not. Never
ortant to the
hem,
most pertin
swers follow
t you build
et the commu
longer period
i architects
rectly, we de
y to build
anned and b
steelwork ab
e on the prem
chool was bui
The school an
one hour a d
the case. The
Industrial
in woodwork
mechanical de
expand the p
metal and exp
fall if we c
cher.
or high-scho
tomorrow, w
t true that
ou can't repl
? true. (But
ion could pro
nsiderable co
t cost \$6,000
ool last month
The figure w
FAVOR
on told a me
ional Industr
that the tre
will soon b
t guidelines
new tax favo
asses-to-buy
ID POLITICS
r, former Br
from-Arlin
t he was a
a return to
has not de
id for a Sen
e defeated G
ee said he
r President
ob for
Gas
OB FOR
ANE
JUMBIN
ARS
PH. 479-317
5-
50c
r 89c
99c
79c
63c
49c
0 p.m.
'S
11

Gelman Firm Doubles Staff on Lab Sales Force

Gelman Instrument Co. has added 14 sales offices and 180 salesmen in the U.S. and Canada, with the appointment of a new distributor to handle its medical and laboratory products, President George Gelman announced this week.

The new distributor, Fisher Scientific, will service Gelman's sales offices and warehouses in Boston, Chicago, Cleveland, Houston, New York, Philadelphia, Pittsburgh, St. Louis, St. Paul, Washington, D.C., in the U.S., plus three Canadian locations in Edmonton, Montreal and Toronto.

Gelman's other distributor for medical-laboratory products is Scientific Products Division of American Hospital Supply, which has 200 salesmen working from 18 U.S. and Canadian offices.

Products to be handled by the distributor include electrocardiographs, X-ray films, X-ray apparatus and technical instruments and accessories, various filters and accessories, and laboratory equipment.

Industrial products of the company which include air pollution control instruments, and liquid and solid waste treatment equipment, are handled through a network of 80 distributors' representatives.

Immunization Clinics Slated For All County Schools

The Washtenaw County Medical Society and the Washtenaw County Health Department will conduct clinics for booster immunization against polio, diphtheria, tetanus and smallpox in the junior high schools during April, announced Dr. Gerhard H. Bauer, president of the local Medical Society.

The clinics will be conducted for 9th and 10th grades in areas where there is no separate junior high school.

"Immunization practices developed through the years in Washtenaw county have practically eliminated the possibility of an outbreak of polio, diphtheria or smallpox," said Dr. Bauer. For more than six years there have been no reported cases of polio or smallpox and only one reported case of diphtheria, he went on to say.

Over the years the basic program has been the routine immunization of infants and pre-school children in physician's offices. This program has been so well tolerated that about 95 percent of the children entering kindergarten and new enrollees in grades one to six were immunized against smallpox, polio, diphtheria and tetanus. This has been supplemented by well-child clinics and other clinic programs as well as the annual school programs like those scheduled for April.

Both public and parochial schools have co-operated in the spring immunization clinics held annually since 1947. "Periodically the Public Health Committee of the Medical Society reviews the immunization program and recommends changes to meet the needs of the children and to use new advances in medical knowledge," Dr. Bauer explained.

A review of the 24 years of the immunization program indicates these changes. From 1941 to 1944 smallpox and diphtheria immunizations were offered to children of all ages, particularly pre-schoolers. Three years later whooping cough immunizations were added for young children. By 1946 a high percentage of the pre-schoolers were protected against diphtheria, smallpox and whooping cough. Emphasis was then given to the school age child because of an increasing number of cases of diphtheria. In the 10th year of immunization, triple vaccine which protects against diphtheria, whooping cough, and tetanus was used for the first time.

1955 marked a new era for the attack on contagious childhood diseases with the advent of polio vaccine. Polio vaccination clinics were conducted by the Medical Society for 1st and 2nd graders in county schools and for others in doctors' offices at no or a very low charge. By 1959, 90 percent of the children in Washtenaw county had been immunized against polio by their family physician or at the immunization clinics.

"In the last four years the annual Medical Society-Health Department immunization clinics have offered booster immunization for the junior high students," said Dr. Bauer.

Father Says 'No' Dates Until 18th Birthday



own" you will be glad they cared enough to take the time to be "parents" and not merely good providers.

Your father lets one boy come to see you. He has promised you can "go out" when you reach a certain age. Thousands of teenagers would be happy in your situation. The majority of letters this column receives is from teenagers who express unhappiness because parents "won't let boys even come to see me" and "won't allow me to even talk to boys."

The next big problem of the teenage population can be summed up in these words, "I like this boy, but I don't know if he likes me. How do I find out for sure?" Needless to say, there is no quick answer suitable for either problem.

If you have a teenage problem you want to discuss, or an observation to make, address your letter to FOR AND ABOUT TEENAGERS, COMMUNITY AND YOUTH PRESS SERVICE, FRANKFORT, KY.

THE WEEK'S LETTER: "My question concerns dating. I am 16 years old and my father doesn't want me to go out with boys until I am 18, although he trusts me. He will let one boy come to the house. Yet, I feel that I am old enough to go out. What do you think?"

OUR REPLY: Any opinion that someone gave to you would be just that, an opinion. The thing you must remember is that you have to obey the wishes of your parents. They are responsible for your welfare and guidance. You will not always agree with them. You may question their decisions and their attitude, but you should always respect their judgment and obey their wishes. When the day comes that you are "on your

DILLON ON U.S. GOLD
Treasury Secretary Douglas Dillon told Congress that a U.S. attempt to drain gold from abroad would lead to a drive by other countries to protect their supplies with new controls. Since 1957 European countries have increased their holding from some \$9,500,000,000 to \$19,200,000,000.

The reason many enterprises fail to go forward is that it is much easier to plan to do than to actually do.

FAT OVERWEIGHT
(Paid Advertisement)
Available to you without a doctor's prescription, our product called Galaxon. You must lose ugly fat or your money back. Galaxon is a tablet and easily swallowed. Get rid of excess fat and live longer. Galaxon costs \$3.00 and is sold on this guarantee: If not satisfied for any reason, just return the package to your druggist and get your full money back. No questions asked. Galaxon is sold with this guarantee by:
CHELSEA DRUG STORE - CHELSEA
Mail Orders Filled.

SALE

CORDUROY SLACKS

By Farah
Light tan and olive.

Regular \$5.98
NOW **\$3.98**

Strieter's Men's Wear

"The Place To Go for Brands You Know"

Rural Correspondence

Items of Interest About People You Know

FOUR MILE LAKE

Mr. and Mrs. Robert Blisseth and family, of Napoleon, were Sunday evening visitors of her parents, Mr. and Mrs. Charles Moore.

Carl Brassow of Northwestern College at Watertown, Wis., spent the week-end with his parents, Mr. and Mrs. Ray Brassow and family.

The children of Mr. and Mrs. Charles Trinkle were Sunday visitors of Mr. and Mrs. Jerald Heydlauff.

Mr. and Mrs. Allen Elsassner and sons were Sunday dinner guests of her parents, Mr. and Mrs. Burton Wright. This was a birthday anniversary honoring their daughter, Mrs. Elsassner. Afternoon visitors were Mr. and Mrs. Donald Wright and daughters and Mr. and Mrs. Robin Wright and son.

Mr. and Mrs. Wayne Osborn and family, of Parma, were Sunday afternoon visitors of her parents, Mr. and Mrs. Clarence Moore.

Mrs. Ezra Heininger has had a letter from her sister, Mrs. Leonard Loveland, who is spending some time in Hawaii, and she is enjoying the 80 degree weather and fresh pineapple juice and feeling sorry for the rest of us.

Mrs. Glenn Rentschler of Waterloo was a Friday afternoon visitor of her aunt, Mrs. Ezra Heininger.

NORTH FRANCISCO

Mr. and Mrs. Nelson Peterson, Mr. and Mrs. Clifford Peterson and Mrs. Rudolph Rohde and Randy spent Tuesday afternoon with Mrs. Warren Welton.

Mr. and Mrs. Rudolph Rohde and sons called on Mr. and Mrs. Bob Rohde of Ypsilanti, Sunday afternoon.

Mr. and Mrs. Chester Notten spent Sunday with Mr. and Mrs. Chester Davis and family at Toledo.

Mr. and Mrs. Roy Miller called on Esther Waddell and George Zeeb Sunday evening.

Mr. and Mrs. Ray Millman of Jackson and Mr. and Mrs. Roy Miller attended the 46th anniversary banquet of the American Legion Saturday evening at the Legion Home at Cavanaugh Lake.

Mr. and Mrs. Phillip Hosier and daughters called on Walter Riemenschneider Sunday afternoon.

LYNDON TOWNSHIP

Tommy Shanahan spent the week-end with his grandparents Mr. and Mrs. Lawrence Shanahan.

WATERLOO

Guests at the home of Mr. and Mrs. Alva Beeman at Stockbridge were Mr. and Mrs. Pete Carty of Waterloo. Mr. and Mrs. Ralph Reynolds of Jackson, Mrs. Ardie Collins of Stockbridge, and Kay Carty of Ann Arbor. A dinner was held in honor of the March birthdays of Mr. Carty, Mr. Beeman, Mr. Reynolds and Mrs. Collins.

A son was born Friday, March 19, to Mr. and Mrs. Willard Morley at St. Joseph Mercy Hospital, Ann Arbor. Mrs. Morley is the former Olive Marie Beeman.

Sunday visitors of Mr. and Mrs. George Young were their daughter and son-in-law, Mr. and Mrs. Willard Kuhn and daughter, Janis, and Mr. and Mrs. Charles Kuhn.

Mrs. Arthur Walz spent Sunday with her daughter and son-in-law, Mr. and Mrs. Kenneth Stanfield and Delores, of Stockbridge.

Mrs. Grace Davison was a recent caller of Mrs. Arthur Walz. Emory Runelman was a recent visit of Mrs. Walz.

Mr. and Mrs. Lyle Walz visited Mr. and Mrs. Emerson Lesser of Crooked Lake, Sunday.

The Mt. Hope Cemetery Association of Waterloo will meet Friday, March 26 at 8 p.m. at the Waterloo Town Hall.

Sherry Silvernail spent Saturday night with Annette Schulz. Mr. and Mrs. Harold Schauer visited their son and daughter-in-

law, Mr. and Mrs. Charles Schauer of Ann Arbor, Sunday.

The Kenneth Platt family had as Sunday dinner guests Mr. and Mrs. Alex Erestin and family and Mr. and Mrs. Clyde Matthews.

Lisa Beeman, the small daughter of Mr. and Mrs. Donald Beeman came home from Foote Hospital, Saturday afternoon after almost a month there. Lisa only weighed four pounds when she was born but now tips the scales at five pounds 15 ounces.

The Father and Son banquet was held Saturday night at the Waterloo Village church with 44 attending. After the meal was served, awards were given and George Young received the award for the oldest father; Kenneth Platt and Duane Walz tied for the award for the most sons present, with four sons each; the youngest father was Charles Adkins and his son, Steven Adkins was awarded the prize for the youngest son present. Master of ceremonies for the evening was Henry Walters.

Self-Service Post Office Being Tried

More service facilities for the postal customer are receiving new emphasis in the postal system, Postmaster Mayer commented today after receiving word from Postmaster General John A. Gronowski in Washington, D.C., of a new improved "self-service post office."

The new experimental 24-hour self-service unit, the second, opened in mid-March just outside Los Angeles, to meet after-hours postage and mailing needs of suburbanites.

The first unit was installed recently at a shopping center just outside Washington, D.C. It offers around-the-clock facilities for buying stamps, postal cards and envelopes at cost, mailing letters and weighing and mailing parcels.

In the new model, the vending machines dispensing cards, envelopes, etc., have five times as much capacity, and a larger roof over the vending devices and parcel post drops for better protection of the public.

The self-service units are designed as a supplement to service, and not as a replacement for central postal facilities or personnel, Postmaster Mayer added.

"While there has been no determination yet of how far this program will be expanded, it has a great potential for helping to meet the tremendous increases in suburban demands more efficiently, while providing better service."

No true religion rests upon the assumption that everybody else is wrong and they alone are right.

WHAT IS IT? ? M M ?

Something Special
Something Helpful
Something for Everyday

Coming to Chelsea April 1st

See other advertisement elsewhere for additional clues.

FEED FOR PROFIT

HERE'S HOW TO GET RESULTS...

Plan your feeding program around Fortified Feeds, scientifically compounded to increase growth, production.

Farmers' Supply Co.

Phone GR 5-5511

DR. CHARLES MILLER

OFFICE HOURS

ANN ARBOR	CHELSEA
2378 E. Stadium Office 103	138 E. Middle St.
Monday, Wednesday, Friday 9:00 a.m. to 11:30 a.m. 2:00 p.m. to 4:30 p.m. 7:00 p.m. to 8:00 p.m.	Tuesday & Thursday 2:00 p.m. to 4:30 p.m. 7:00 p.m. to 8:00 p.m.
Tuesday & Saturday 9:00 a.m. to 11:30 a.m.	Saturday Afternoon By Appointment
PHONE 663-5414	PHONE 479-5241

Don't make me laugh.

You mean to say, I could have bought a big, luxurious Dodge Polara, and I would have gotten a 383 cu. in. V8, carpeting, foam seats, and all those other things at no extra cost? Who's laughing?



At Polara's prices, why clown around with smaller cars? See your Dodge Dealer.

See Polara—with a 121 inch wheelbase, weighing almost 4,000 pounds. Powered by a 383 cu. in. V8. At popular prices.

'65 Dodge Polara


G. A. SALES & SERVICE

1185 CHELSEA-MANCHESTER ROAD
WATCH "THE BOB HOPE SHOW," NBC-TV, CHECK YOUR LOCAL LISTING.
CHELSEA, MICHIGAN

MAKE MILK

the mainstay of your LENTEN MEALS

Brighten and enrich lenten menus with milk and other dairy products.



WEINBERG DAIRY

QUALITY PASTEURIZED DAIRY PRODUCTS

Old US-12 Phone GR 5-5771



BANKING TWINS

If your family has increased... you need a SAVINGS ACCOUNT for the future—and a CHECKING ACCOUNT for the present to pay bills. Open TWIN accounts here!

4% INTEREST PAID ON ALL SAVINGS ACCOUNTS

CHELSEA STATE BANK

Member Federal Reserve System
Member Federal Deposit Insurance Corp.

Community Calendar



Lyndon Extension Study Group March 31, at 12:30 p.m., at the Lyndon Town Hall instead of April 1 when it is scheduled, this time only because chairman, Mrs. Walter Bjonowski will be out of town.

Past Presidents of American Legion Auxiliary Tuesday, March 30, at 6:30 p.m. at Schumm's. If transportation is desired please call Mrs. Lynn Kern, 475-8563.

Legion Auxiliary meeting Tuesday, April 6, at the Legion Home, 8 p.m.

Rebekah bake sale Saturday, April 10, at 10 a.m. at the Chelsea Hardware.

Rebekah Lodge will have a bake party and social evening, Tuesday, March 30 at the Lodge hall beginning at 7:30 p.m. Rebekahs, and friends are invited. The committee for the evening is Mrs. Robert Hockrein, Mrs. Mac Packard and Mrs. Clarence Lake, co-chairmen.

St. Paul's Mission club at home of Mrs. Paul Seitz, Thursday, April 1, 2 p.m.

Regular meeting of St. Paul's Youth Fellowship, Sunday night, March 28, at the church hall.

Limekeepers Thursday, April 1, at the home of Mabel Whitney, with a pot-luck dinner at 12:30 p.m.

Legion Birthday . . . (Continued from page one)

Alma Elise, Roxie Maroney, Loreta Doll, Erma Mayer, Gladys Kolb, Cecil Miller, Agnes Hummel and Myrtle Schooley received 30 year citations.

The burning of the mortgage in a ceremony during the banquet was a highlight of the evening.

The original building was started in 1934 or 1935 and was completed in 1938. Additions were made on the east for dining and on the north for a kitchen and heating space, sometime in 1945 according to those that "try to remember." A bar was set up in the basement of the building in 1946.

The Auxiliary was started in 1933 and 30 members joined at this time 16 of them are with the Auxiliary at this date. The group has been active in many worthwhile endeavors.

Auxiliary members helped clean, paint and curtain the Legion Home. They have 26 past presidents, 90 paid up members, 13 Junior members, four Gold Star Mothers and they have a Memorial Shelf in the Chelsea Public Library for their deceased members.

A representative of Division of Vocational Rehabilitation, Department of Public Instruction, will hold office hours 1-3 p.m. every other Friday beginning March 26 at the Social Service office of Mrs. Louis Ramp in the Municipal Building, to interview any handicapped person who feels they may be benefitted by this agency. This service covers the Chelsea-Dexter area.

Fire Destroys Small Barn on Groves Farm

The Chelsea Fire Department answered a call on Sunday at 4:58 p.m. at the home of Wendell Groves on Pekins Rd.

A small barn used for a shop, containing tools, car batteries and other types of batteries was burning.

The fire had enough of a start so that it had burned the wires to the telephone in the shop and also put the telephone in the house out of order.

The person discovering the fire had to run to the neighbor's to call the fire department thus causing delay and giving the fire more time to do damage. The building was completely demolished.

The fire also caused a short circuit and caused the siding of the residence to catch fire. However, this was confined to just the outside siding and the burning was soon put out and only minor damage was done to the outside of the house.

Fire Chief Gaken said the Chelsea department had three trucks at the scene for two hours.

BIRTHS

A daughter, Heather Lee, Friday, March 12, to Mr. and Mrs. Douglas S. Myers.

A son, David William, Thursday, March 18, to Mr. and Mrs. Sylvester Wojcik.

A son, John Alfred, Friday, March 12, to Mr. and Mrs. Alfred Smith of Monroeville, O. Smith was formerly a teacher in Chelsea.

A son, Wilson Paul, Jr., March 19, to Mr. and Mrs. Wilson P. Morley.

Misses Ann Marie and Leslie Bury are visiting their grandparents, Mr. and Mrs. Floyd Rowe, while their mother and brother are ill with strep throat infections.

AREA DEATHS

John McMillan

Restaurant Owner Dies Suddenly Saturday Morning

John McMillan, 66, of 121 S. Main St., died suddenly early Saturday morning.

He was born April 8, 1898, in Ironwood, the son of Alexander and Bridget McCafferty McMillan.

He was married to Ella Peterson on Dec. 27, 1922 in Ashland, Wis. and the couple spent several years there before moving to Ann Arbor in 1943. In 1953 Mr. McMillan came to Chelsea and opened Chelsea Restaurant. He has been a cook all of his life.

Mr. McMillan was a member of the Fraternal Order of Eagles.

He is survived by his widow; two daughters, Mrs. Marion (Charlotte) Oaiski and Mrs. John (Noel) Laraway both of Chelsea; one brother, Joseph of Green Bay, Wis.; one sister, Mrs. Louise Lemense of Iron Mountain; eight grandchildren and several nieces and nephews.

Funeral services were held Tuesday, at 9 a.m. at St. Mary's Catholic church with the Rev. Fr. Francis Maliszewski officiating. Burial was in Mt. Olivet cemetery. The Rosary was recited at 8 p.m. Monday at the Staffan Funeral Home.

Mrs. Walter Wendell

Dies at Nursing Home Following Long Illness

Mary N. Wendell, 73, of 1035 Sugar Loaf Lake, died Sunday, March 21, at Colonial Manor where she had been for the past 10 years.

She was born Jan. 10, 1892 in Pittsburgh, Pa., the daughter of Mr. and Mrs. John Sklar.

She married Walter Wendell in 1934 and they made their home at Sugar Loaf Lake. Mr. Wendell died Feb. 8, 1960. He was employed at Cassidy Lake Technical school.

Mrs. Wendell is survived by one son, Albert Gonas, of Grosse Pointe; two step-sons, Clinton and Edgar Wendell, of Detroit; three daughters, Mrs. Margaret DeLong of Panorama City, Calif.; Mrs. Elma Klok of Detroit; Mrs. Teresa Klang of Suttons Bay; a step daughter, Mrs. Dorothy Studebaker of St. Clair Shores; one brother, John Sklar of Detroit; five sisters, Mrs. George Neuman, Mrs. Ross Logsdon, Mrs. R. Benning, all of Detroit; Mrs. E. French of Seattle, Wash., and Mrs. Arthur Day of Ann Arbor; nine grandchildren and 29 great-grandchildren.

Funeral services were held at the Staffan Funeral Home, Wednesday, at 11 a.m. with the Rev. James Craig officiating. Burial was in Oak Grove cemetery.

You can justify your failure with good excuses but they interest nobody else.

Display Advertising Copy Deadline: Monday, 5 p.m.

Harry C. Trouten

Former Chelsea Resident Dies Sunday in Jackson

Harry C. Trouten, 66, of 615 Evanston Dr., Jackson, died Sunday.

He was born Aug. 4, 1898, in Chelsea, the son of Richard and Hattie McCarter Trouten.

He married Etta N. Boozer on Nov. 20, 1919 in Jackson.

Mr. Trouten had been employed as a refrigeration engineer.

He is survived by his widow and one daughter, Mrs. Max (Harriett) Lowe of Jackson.

Funeral services were held Wednesday at 2 p.m. at the Staffan Funeral Home with the Rev. James Craig officiating. Burial was in Oak Grove cemetery.

LEGISLATIVE REPORT

By Rep. Thomas G. Sharpe

A new record was reached in the legislature this week when it was reported that the Legislative Service Bureau had received over 2,100 requests for bill drafting. This tops last year's record of 1,840 and undoubtedly will mean a record number of bills being introduced.

Despite this, actual deliberations on legislation of any great importance have been proceeding at a very slow pace. Whether the 73rd legislature, controlled by the Democrats for the first time in 30 years, will go down as the slowest in recent years has yet to be determined.

Another probable record in the making is the cost of this legislature to the taxpayer. New chairs, desks, rugs, office remodeling costs, moving expenses, and larger staffs all have led the majority party to seek additional appropriations for running legislative business. A recent report estimated that this legislature will cost around 4 million dollars.

Rules of procedure were the subject of much debate recently. After two months of operation, the House rules were finally adopted over Republican objections to some of the revisions being made. One controversial rule change was the lowering of the number of votes needed to suspend the rules—from the long-standing two-thirds to a potentially dangerous three-fifths. Other revisions placed a great amount of power, formerly held by the total House membership, in the hands of the Speaker.

The issue of Sunday liquor sales, which was sent back to committee in the Senate, is now before the House. It is expected to raise a great deal of controversy and will be met by much opposition. Sponsors of the measure are not optimistic on its chances of passage.

RINGO WEDS
London Ringo Starr, drummer for the Beatles, has married 18-year-old Maureen Cox. The parents of both and the other members of the Beatles were present for the civil ceremony. Now only two Beatles remain unmarried.

Henry I. Glazier

Former Chelsea Resident Dies Suddenly in California

Henry I. Glazier, 64, of 17081 E. Grovemont St., Santa Ana, Calif., died Saturday, March 13, at his home, of a coronary occlusion.

He had lived in Chelsea and Wayne before going to California.

He was agent-distributor of the Los Angeles Times in California's Orange county.

Mr. Glazier was affiliated with the Methodist church and a member of Wayne Lodge No. 112, F&AM, Wayne.

He was a veteran of World War I.

Survivors include his widow, Doris, two daughters, Mrs. John Dauser of Fullerton, Calif., and Mrs. Dean Smith of Santa Barbara, Calif.; two sisters, Mrs. Edna Schneck of Newport Beach, Calif., and Mrs. Dorothy Baker of Tustin, Calif.; and seven grandchildren.

Funeral services were held at Waverly church in Fairhaven Memorial Park, Santa Ana at 10 a.m., March 15 by the Brown Colonial Mortuary, with the Rev. Harry Ovinga, officiating. Burial and Masonic graveside services were in Fairhaven Memorial Park, Santa Ana, Calif.

Mrs. John Leeman

Sharon Township Resident Dies at Daughter's Home

Mrs. Caroline E. Leeman, 84, of 19266 Lehman Rd., Sharon township, died Sunday at the home of her daughter, Mrs. G. P. Dorr of Grass Lake.

She was born April 5, 1880, in Sharon township, the daughter of Cornelius and Katie Middleton Kendall. On Nov. 15, 1900 she was married to John C. Leeman in Chelsea. Mr. Leeman died in 1948.

After their marriage, Mr. and Mrs. Leeman farmed in Kansas for several years before moving to the Sharon township address in 1911.

Mrs. Leeman is survived by three sons, Sydney and Maurice of Manchester; and John C. of Ishpeming; two daughters, Mrs. Dorr and Mrs. J. M. (Valerie) Saylor of Atlanta, Ga., 13 grandchildren and seven great-grandchildren. A son, Lester, died in 1924.

Funeral services will be held at 10:30 a.m. Thursday at the Staffan Funeral Home with the Rev. William A. Johnson officiating. Burial will be in Vermont cemetery.

Personal Notes

Paul Niehaus is convalescing at his home following an operation and one week at St. Joseph Mercy Hospital in Ann Arbor. He is improving and hopes to be up and around in another week.

Dorr and Edson Whitaker have returned home from a five-day stay in Santa Ana, Calif., where they attended the funeral of Doris Whitaker's brother-in-law, Henry Glazier, formerly a resident of Chelsea.

4 Win State Farmer Degrees

Four boys from the local FFA chapter have been awarded the coveted State Farmer Degree, the highest honor granted by the Future Farmers of America at the state level.

The four boys honored are Danny Eder, son of Mr. and Mrs. Leonard Eder, Donald Hinderer, son of Mr. and Mrs. Norman Hinderer, Dick McCalla, son of Mr. and Mrs. Ralph McCalla, and Kenneth Reinhardt, son of Mr. and Mrs. Alvin Reinhardt.

The State Farmer Degree can be awarded to only one out of every 50 boys of the total state membership. There are just a few more than 12,000 boys in Michigan who are members of the Michigan Association of Future Farmers—240 state farmers are named each year.

Chelsea's chapter, with four state farmers out of a total membership of 89, or about 10 percent, is well above the state average.

This brings the total number of boys of the local chapter to receive the State Farmer Degree to 28, over the year.

The selection of boys to receive the degree is based on home experience programs in agriculture, leadership in the organization, school and community co-operation and citizenship of each boy.

The State Farmer Degrees will be given Thursday (today) at the state FFA convention at Michigan State University, East Lansing.

The total increase over 1963 was \$115,927.

Totals of the real and personal properties as assessed by Nass Hoffman, supervisor of State township for 1965 and approved by the Board of Review is as follows:

Total assessments for 1965 were \$7185,222. For real property, \$4,958,700 and for personal property, \$2,226,522 as opposed to assessed valuation for 1964, \$7,049,255, with Real Property, \$4,878,525 and Personal Property, \$2,170,730.

The total increase over 1964 is \$115,927.

Assessed Valuation Shows Modest Increase

Chelsea-Manchester Rd. Phone 479-4931

Opening April 1

IF WEATHER PERMITS

Need 2 day car hops. One for 11 a.m. till 2 p.m. and one for 11 a.m. till 5 p.m.

APPLY AT 604 SOUTH MAIN ST.

A & W Drive-In

(500 feet north of I-94)
Chelsea-Manchester Rd.
Phone 479-4931



Opening April 1

IF WEATHER PERMITS

Need 2 day car hops. One for 11 a.m. till 2 p.m. and one for 11 a.m. till 5 p.m.

APPLY AT 604 SOUTH MAIN ST.

Gambles The Friendly Store

LAY-AWAY SALE!

\$1.00 Holds Till Spring!

THE TITAN Powerhouse Tiller

40th Anniversary Special

4 H.P. \$139.95

NO MONEY DOWN

Powerful tiller has 2 speeds forward and power reversal. Unbreakable 14" tires fill path to 26" wide, 8" deep. Easy-spin recoil starter, one handle controls all gears. 4 HP engine.

FREE GARDEN TRIAL!

FIELD KING 3 HP TILLER

\$119.95

NO MONEY DOWN

Rugged bolo lines till from 8" to 26" width

Rugged 3 HP Briggs-Stratton engine powers unbreakable tiller tires, fills up to 26" wide. "Quick-Lok" clutch. Recoil starter. Two 10" x 17.5 semi-pneumatic transport wheels.

FREE GARDEN TRIAL!

24" Imperial RIDER MOWER

TRADE YOUR OLD MOWER

40th Anniversary Special

\$2.15 a week—Payable Monthly

Rider mower comfort at low cost—features comparable to those of the most deluxe, high cost models.

\$159.95

EASY TERMS AT GAMBLES

Armstrong SU SPENDED CEILINGS with the smart WOOD BEAM EFFECT



This unique idea in suspended ceilings brings the rich effect of wood beam ceilings into any room in your home. Metallic runners are quickly and easily installed—no time-consuming and expensive wood framing, staining, or finishing to bother with. The Armstrong "Wood Beam" Suspended Ceiling is ideal for finishing off new rooms, lowering high ceilings, or covering unsightly ceilings.

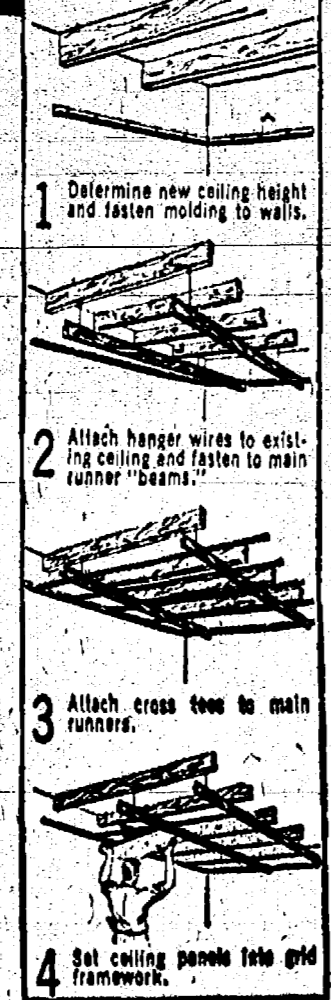
Easy to install yourself

Metal "beams", simulating a real wood appearance, assemble into a framework which conveniently accommodates famous Armstrong Ceiling and Luminous Panels. These ceilings are available in acoustical and nonacoustical panels with subtle designs and embossed surfaces.

12' x 16' room as low as



Imagine Coca-Cola President of the Armstrong Ceiling Watchers' Society



Stop in soon—see "beam-effect" ceiling on display in our showroom.

CHELSEA LUMBER CO.

Dial GR 5-3391

HOOVER

SALE! of 1964

Convertible Specials

This Hoover Convertible Special is a best buy anytime and here's why. It features Hoover's exclusive Triple Cleaning Action . . . "It beats, as it sweeps, as it cleans!"

Its an even better buy at our low price

MODEL 32 ONLY \$59.95

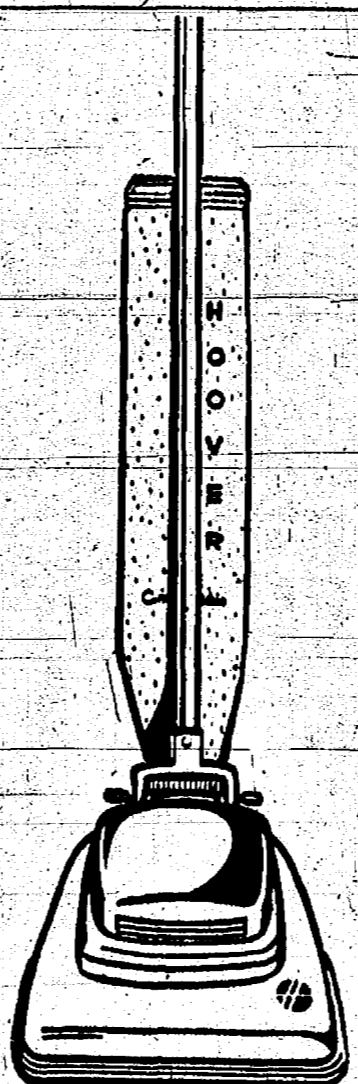
SPECIAL THIS WEEK. Set of Attachments (with cleaner) \$1.00

FRIGID PRODUCTS

113 North Main St.

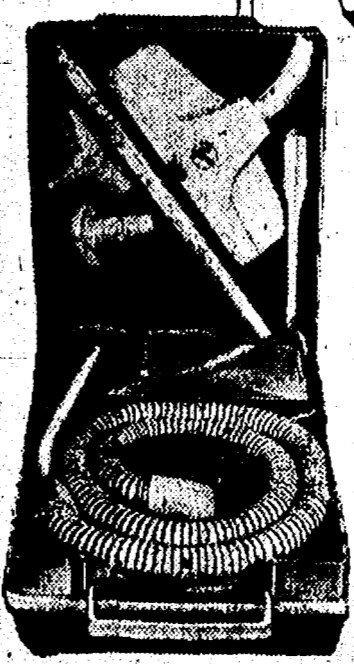
LLOYD R. HEYDLAUFF

Phone GR 9-6651



new! HOOVER portable

the cleaner that has everything INSIDE!



Brand new idea in vacuum cleaners . . . all your attachments including hose right where you need them. More suction, more cleaning ability, more quality . . . because it's a Hoover.

A SUPERMARKET THAT IS JUST A LITTLE BETTER

STORE HOURS:
Monday thru Wednesday 9 a.m. to 6 p.m.
Thursday & Friday 9 a.m. to 9 p.m.
Saturday 8 a.m. to 9 p.m.
OPEN SUNDAY 10 a.m. to 6 p.m.

Stop & Shop

14901 Old U.S.-12
Corner at M-52
Chelsea

Our Friendly,
Competent Meat
cutting experts
are always on duty



All Stop and Shop Meat Is
Cut to Customer's Specifications

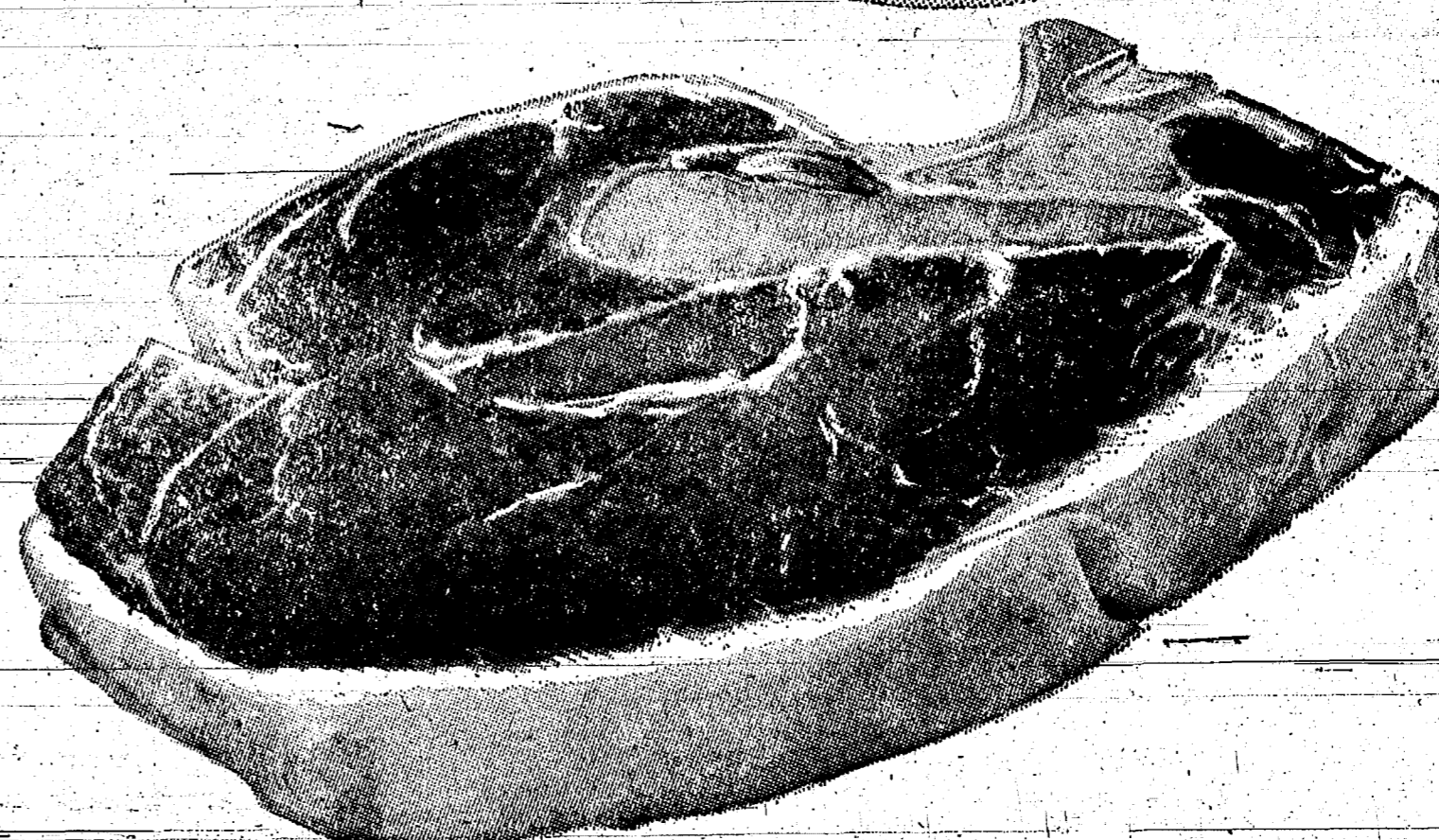
Select your Meat
the same way
your Mother did



"TRIPLE R FARMS" U.S.D.A. CHOICE

SIRLOIN STEAK

89^c
lb.



"TRIPLE R FARMS" U.S.D.A. CHOICE

Round Steak

79^c
lb.

"TRIPLE R FARMS" U.S.D.A. CHOICE BONELESS ROUND STEAK 89c lb.

"TRIPLE R FARMS" U.S.D.A. CHOICE

Ground Round Steak

79^c
lb.

"Triple R Farms" Lean Tender

Cube Steak

99^c Lb.

Lean, Meaty Tender

Pork Steak

49^c Lb.

Lean, Tender, Boston Butt

Pork Roast

39^c Lb.

"Triple R Farms" U.S.D.A. Choice

Rib Steak

79^c Lb.

"Triple R Farms" U.S.D.A. Choice

Chuck Steak

59^c Lb.

Stop & Shop Mich. Grade 1

Skinless Franks

39^c Lb.

VELVET — Made by Sealtest
ICE CREAM

Half
Gallon
Carton

39^c



Shamrock Grade "A" Country Fresh

Eggs

All White
Dozen in Carton
Medium Size

3 Dozen \$1

Campbell's

Pork & Beans

1-lb.
Can

13^c

Kraft's Cheese Spread

Velveeta

Plain or
Pimento

2-lb.
Box

79^c

Stop & Shop's Enriched Sliced

White Bread

1-lb.,
4-oz.
Loaf

5 \$1

Jell-O

Whip n' Chill

3 3/4-oz.
Pkg.

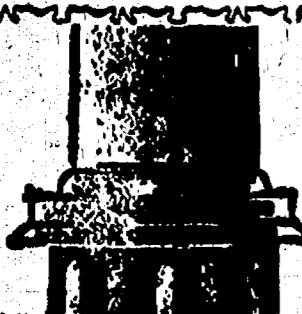
23^c

SALAD DRESSING

Miracle Whip

Quart
Jar

44^c



BLUE RIBBON

Margarine

In 1/4-lb.
Prints

15^c

Cap'n Crunch

Cereal

11 1/2-oz.
Box

39^c

Wagner's

Orange Drink

Quart
Jar

25^c

Hart's

Tomato Juice

1 Qt.
14-oz.
Can

19^c

Kraft Deluxe Macaroni & Cheese

DINNER

14-oz.
Box

39^c

Baby Food Strained Varieties

Gerber's

3 4 1/2-oz.
Jars

25^c

Silver Floss

Sauer Kraut

17^c

Howard Johnson Frozen Macaroni & Cheese

DINNER

14-oz.

25^c

Sno-White

Cauliflower

Large
Head

29^c

Nabisco

Vanilla Wafers

12-oz.
Box

39^c

Sunshine Cookies

Yum Yum

11-oz.
Box

45^c

Prices effective Wednesday,
March 24 thru Tuesday, March
30, 1965

**LAST WEEK'S
ANSWER**

37. Flowerless
 plant
 38. Scottish-
 Gaelic
 41. Hasten
 43. Compass
 point

5	6	7	8	
10				
11				13
14				
16				
		19		
	21			
	25	26	27	28
31				
		33		
	36		39	
42		45		
46				

endanger a prosperous
cient agriculture.
Washington visitors feel
ners should have "their
gricultural matters in the
trend when ears are more
tuned to labor leaders
farmers—even on farm
s. feel constrained to
the labor measures, de-
put cheaper food on the
an actually mean higher
the market basket in the
—and that this is a matter
public interest."

PUBLIC ESTATE

— When Sir Winston
— will was filed in pro-
t, a report valued his
\$489,490. His widow,
archill will receive one
d the remaining two
ill be divided equally
s three children.

CHRISTIAN SCIENCE MONITOR

**World
News**

FOCUS

Plan Science Monitor
by St., Boston, Mass. 02115

Enter my subscription to the
for the period checked be-
cause \$ _____ (U.S. Funds)

☐ \$24 ☐ 6 months \$12
☐ 3 months \$6

ZIP Code _____ PM-1

C E

ETING

GIVEN,

ship Meeting

the

edom

of Michigan

ip Hall
(Center Road)
Standard Time
1965
D EISEMAN
Township Clerk.



Sports corner

from **HISTORY'S SCRAPBOOK**
IMPORTANT DATES AND EVENTS FROM YESTERYEARS

Sylvan Mixed League

Howling Hounds	86	34
the Jets	54½	45
ambassadors	50	50
B's & a R	47½	48
ylvan Hotshots	44	56
Strike Outs	34	82
200 games: C. W. Lake, 208;		
A. Anderson, 203-207; W. Griffith		
502.		
500 series: E. P. Anderson, 58		
7. Griffith, 551.		
450 series: B. Cruse, 497; C. V		
lake, 490; A. Sannes, 455.		
175 games: B. Cruse, 184;		
Sannes, 184; W. Griffith, 183;		
Hutzel, 181; J. Hutzel, 175.		

Guys and Gals

Mixed League

Mixed League
Standings as of March 18

	W	L
Black Potts	61	25

ood Losers	59	37
aydons	56	35
reen Giants	55	41
ells	48½	47
wo plus Two	46½	49
litos	46	50
apers	40	56
Two Seasons	35½	60
helsea Lanes	32½	63
Women's 150' or over games:		
Hickelman, 150; S. Roberts, 155;		
Elselmann, 196; 192; A. Turner,		
122-160-160; P. Huston, 151;		
W. Fritz, 209-156-153; N. Simpos,		
200-213; P. Krueger, 166; P. Poen,		
201-194-154; J. Priest, 15		
Women's 425' or over series:		
W. Fritz, 549; N. Simpos, 566;		
W. Fritz, 518; P. Huston, 433;		
W. Fritz, 478.		
Men's 175' or over games:		

usterer, 190-177-177; B. Prielipp, 195; J. Eisemann, 196-192; Meyer, 210-182; E. Greenleaf, 188

Men's 475 or over series

Hainstock, 475; J. Fowler, 40	
Krueger, 475; C. Hatley, 48	
Stelnaway, 500; D. Eitz, 47	
Boyer, 516; E. Greenleaf, 53	
Eisemann, 542; L. Kusterer	
4; B. Pritchipp, 548.	

Chelsea Suburban League

Standings as of March 17

	W	L
Montclair Manor	81	31
Lancaster's Dept. Store	61	51
Hillier's Grocery	61	51
E Gals	61	51
Quality Lancers	59	53
Novatty Ann Shoppe	56 1/2	55
Power Shell	55 1/2	56
Westes Brgs	55	57
State Farm Ins.	50 1/2	61
Trail Blazers	47	67

High team, 1 game: Colonel
anor, 793.
High team, 3 games: Colonel
anor, 2,264.
High ind. 1 game: Rose McG
ey, 198.
High ind. 2 games: Rose McG

Over 435: N. Simpson, 512; 436: A. W. Fawcett, 479; D. Fouty, 446; R. W. 437: A. Bucholz, 445; M. F. Ferri 438: L. Welshans, 454; M. Hoc 439: J. 487; E. Yocum, 430; A. Hoc 440: G. 426; B. Fritz, 463; 441: S. 442: S. 443: S. 444: S. 445: S. 446: S. 447: S. 448: S. 449: S. 450: S. 451: S. 452: S. 453: S. 454: S. 455: S. 456: S. 457: S. 458: S. 459: S. 460: S. 461: S. 462: S. 463: S. 464: S. 465: S. 466: S. 467: S. 468: S. 469: S. 470: S. 471: S. 472: S. 473: S. 474: S. 475: S. 476: S. 477: S. 478: S. 479: S. 480: S. 481: S. 482: S. 483: S. 484: S. 485: S. 486: S. 487: S. 488: S. 489: S. 490: S. 491: S. 492: S. 493: S. 494: S. 495: S. 496: S. 497: S. 498: S. 499: S. 500: S. 501: S. 502: S. 503: S. 504: S. 505: S. 506: S. 507: S. 508: S. 509: S. 510: S. 511: S. 512: S. 513: S. 514: S. 515: S. 516: S. 517: S. 518: S. 519: S. 520: S. 521: S. 522: S. 523: S. 524: S. 525: S. 526: S. 527: S. 528: S. 529: S. 530: S. 531: S. 532: S. 533: S. 534: S. 535: S. 536: S. 537: S. 538: S. 539: S. 540: S. 541: S. 542: S. 543: S. 544: S. 545: S. 546: S. 547: S. 548: S. 549: S. 550: S. 551: S. 552: S. 553: S. 554: S. 555: S. 556: S. 557: S. 558: S. 559: S. 560: S. 561: S. 562: S. 563: S. 564: S. 565: S. 566: S. 567: S. 568: S. 569: S. 570: S. 571: S. 572: S. 573: S. 574: S. 575: S. 576: S. 577: S. 578: S. 579: S. 580: S. 581: S. 582: S. 583: S. 584: S. 585: S. 586: S. 587: S. 588: S. 589: S. 590: S. 591: S. 592: S. 593: S. 594: S. 595: S. 596: S. 597: S. 598: S. 599: S. 600: S. 601: S. 602: S. 603: S. 604: S. 605: S. 606: S. 607: S. 608: S. 609: S. 610: S. 611: S. 612: S. 613: S. 614: S. 615: S. 616: S. 617: S. 618: S. 619: S. 620: S. 621: S. 622: S. 623: S. 624: S. 625: S. 626: S. 627: S. 628: S. 629: S. 630: S. 631: S. 632: S. 633: S. 634: S. 635: S. 636: S. 637: S. 638: S. 639: S. 640: S. 641: S. 642: S. 643: S. 644: S. 645: S. 646: S. 647: S. 648: S. 649: S. 650: S. 651: S. 652: S. 653: S. 654: S. 655: S. 656: S. 657: S. 658: S. 659: S. 660: S. 661: S. 662: S. 663: S. 664: S. 665: S. 666: S. 667: S. 668: S. 669: S. 670: S. 671: S. 672: S. 673: S. 674: S. 675: S. 676: S. 677: S. 678: S. 679: S. 680: S. 681: S. 682: S. 683: S. 684: S. 685: S. 686: S. 687: S. 688: S. 689: S. 690: S. 691: S. 692: S. 693: S. 694: S. 695: S. 696: S. 697: S. 698: S. 699: S. 700: S. 701: S. 702: S. 703: S. 704: S. 705: S. 706: S. 707: S. 708: S. 709: S. 710: S. 711: S. 712: S. 713: S. 714: S. 715: S. 716: S. 717: S. 718: S. 719: S. 720: S. 721: S. 722: S. 723: S. 724: S. 725: S. 726: S. 727: S. 728: S. 729: S. 730: S. 731: S. 732: S. 733: S. 734: S. 735: S. 736: S. 737: S. 738: S. 739: S. 740: S. 741: S. 742: S. 743: S. 744: S. 745: S. 746: S. 747: S. 748: S. 749: S. 750: S. 751: S. 752: S. 753: S. 754: S. 755: S. 756: S. 757: S. 758: S. 759: S. 760: S. 761: S. 762: S. 763: S. 764: S. 765: S. 766: S. 767: S. 768: S. 769: S. 770: S. 771: S. 772: S. 773: S. 774: S. 775: S. 776: S. 777: S. 778: S. 779: S. 780: S. 781: S. 782: S. 783: S. 784: S. 785: S. 786: S. 787: S. 788: S. 789: S. 790: S. 791: S. 792: S. 793: S. 794: S. 795: S. 796: S. 797: S. 798: S. 799: S. 800: S. 801: S. 802: S. 803: S. 804: S. 805: S. 806: S. 807: S. 808: S. 809: S. 810: S. 811: S. 812: S. 813: S. 814: S. 815: S. 816: S. 817: S. 818: S. 819: S. 820: S. 821: S. 822: S. 823: S. 824: S. 825: S. 826: S. 827: S. 828: S. 829: S. 830: S. 831: S. 832: S. 833: S. 834: S. 835: S. 836: S. 837: S. 838: S. 839: S. 840: S. 841: S. 842: S. 843: S. 844: S. 845: S. 846: S. 847: S. 848: S. 849: S. 850: S. 851: S. 852: S. 853: S. 854: S. 855: S. 856: S. 857: S. 858: S. 859: S. 860: S. 861: S. 862: S. 863: S. 864: S. 865: S. 866: S. 867: S. 868: S. 869: S. 870: S. 871: S. 872: S. 873: S. 874: S. 875: S. 876: S. 877: S. 878: S. 879: S. 880: S. 881: S. 882: S. 883: S. 884: S. 885: S. 886: S. 887: S. 888: S. 889: S. 890: S. 891: S. 892: S. 893: S. 894: S. 895: S. 896: S. 897: S. 898: S. 899: S. 900: S. 901: S. 902: S. 903: S. 904: S. 905: S. 906: S. 907: S. 908: S. 909: S. 910: S. 911: S. 912: S. 913: S. 914: S. 915: S. 916: S. 917: S. 918: S. 919: S. 920: S. 921: S. 922: S. 923: S. 924: S. 925: S. 926: S. 927: S. 928: S. 929: S. 930: S. 931: S. 932: S. 933: S. 934: S. 935: S. 936: S. 937: S. 938: S. 939: S. 940: S. 941: S. 942: S. 943: S. 944: S. 945: S. 946: S. 947: S. 948: S. 949: S. 950: S. 951: S. 952: S. 953: S. 954: S. 955: S. 956: S. 957: S. 958: S. 959: S. 960: S. 961: S. 962: S. 963: S. 964: S. 965: S. 966: S. 967: S. 968: S. 969: S. 970: S. 971: S. 972: S. 973: S. 974: S. 975: S. 976: S. 977: S. 978: S. 979: S. 980: S. 981: S. 982: S. 983: S. 984: S. 985: S. 986: S. 987: S. 988: S. 989: S. 990: S. 991: S. 992: S. 993: S. 994: S. 995: S. 996: S. 997: S. 998: S. 999: S. 1000: S. 1001: S. 1002: S. 1003: S. 1004: S. 1005:

1st high, team game: Mar. 1941
Tribble, 88.

2ns high, team game: Dyer, 64.
3rd high, team game: Marsh, 63.
1st-high, ind. game: Jim shall, 51.
2nd-high, ind. game: Mike M 44.
3rd high, ind. game: Jim shall, 38.

ON TRADE WITH USSR
A Committee for Economic

A Committee for Economic Development has reported that "tensions in Soviet economic relations with the West may mean the time is ripe for trade overtures between Russia and the U. S. The study says that the Soviet Union is far behind in the Soviet aim of passing American output by 1970."

York passed a compulsory education law, March 27, 1928.
The steamer "Savannah" sailed from New York, March 29, 1819,
the first steamship to cross the Atlantic.
The Dominion of Canada was established, March 29, 1867.
Secretary of State Seward signed a treaty with Russia for purchase
of Alaska, March 30, 1867.
Wabash, Indiana became the first town wholly lighted by elec-
tricity from a single point, March 31, 1860.
April 1st is April Fool, or All Fool's Day.

lems that the Chelsea Council has. There is one thing that the Chelsea Council does not have to contend with. According to one Council member, that is the editor of The Wickenburg Sun is not much interested in the council proceedings. The Chelsea Standard is far superior to the Wickenburg Sun.

The best of wishes to Mr. Scott, Editor Leonard and the Chelsea Village Council.

Dr. L. J. Paul.

CHEESE AND MILK

Cheese is a concentrated form of milk. A medium slice or cube (1-oz.) of American cheese equals about two-thirds of a glass of milk in calcium and protein.

CLUB 15

Club 15 met March 15 at the home of Mrs. Clarence Nutt. The girls this week and next week are planning on a variety show. The purpose of the show is to get the girls up before an audience to overcome their shyness. Half of the club put on their show this week, with the other girls planning for their show next week. The show this week consisted of JoAnn Davis doing riddles, Donna Reynolds read a short story, Lucinda Reynolds read poetry, Charlotte Stelaway sang a short story, Cindy Behnke did the twist, and the girls sang a song. During while the club mascot, Doug Nutt played the flute. Refreshments were served.

MOND

YOUR FAVORITE SANDWICHES
Served at all hours.
BEER - WINE - ALE
Dancing at all times.

WONDER BAR

WONDER BAR

20750 Old US-12 West
Phone 479-9841

To Keep Your Car Operating Efficiently

A periodic lube and grease job is on absolute necessity. Regular lubrication means parts wear longer and engine troubles decrease.



COMPLETE

See Us Now! **COMPLETE ONE-STOP SERVICE**

Bill Brown's Super Service

GOOD GOLF PRODUCTS

295 SOUTH MAIN ST. PHONE GR 9-1311

THE

**GET ON THE
PLYMOUTH
KICK-
QUICK!**

It's the fastest-growing kick around.

'65 FURY

...the big kick!

And Plymouth Dealers are on a dealing kick right now!

Smart car buyers are really on a Plymouth kick—sales are at the highest point in years. So, to get even more people on this Plymouth kick, Plymouth Dealers are making the kind of deals that nobody can kick about.


They're not waiting until spring—they're giving big trades—in fact, your present car will never be worth more in trade than right now. So, for a wintertime deal on a great new car... get on the Plymouth kick—quick

GET A DEAL ON A GOOD USED CAR, TOO!

With Plymouth sales up, Plymouth Dealers are taking more cars in trade. So, for a good buy on a Top Quality used car, go to Plymouthland.

GET A KICKER OF A DEAL AT PLYMOUTHLAND!
G. A. SALES & SERVICE
 1185 CHELSEA-MANCHESTER ROAD CHELSEA, MICHIGAN
 FURY / BELVEDERE / VALIANT / BARRACUDA
 AUTHORIZED PLYMOUTH DEALERS  CHRYSLER
 MOTORS CORPORATION

FURY / BELVEDERE / VALIANT / BARRACUDA

AUTHORIZED PLYMOUTH DEALERS  CHRYSLER
MOTORS CORPORATION

Looking for Recreation?



Try Our Billiard Room

CHELSEA LANES
"A Good Place To Make Friends"
 Phone 475-8141 1180 M-52, Chelsea

Phone 475-8141 **"A Good Place To Make Friends"** 1180 M-52, Chelsea

+ Services in Our Churches +

FIRST METHODIST CHURCH
The Rev. James A. Craig, Pastor
Thursday, March 25—
8:45 a.m.—Sixth grade confirmation class.
7:00 p.m.—High school choir.
8:00 p.m.—Community Lenten Service: Congregational church, Bishop R. S. Ehrlich.

9:00 p.m.—Community choir rehearsal, Methodist church.
9:30 p.m.—Senior choir.
Saturday, March 27—
9:00 a.m.—Junior choir.
10:00 a.m.—Primary choir.
Sunday, March 28—
9:00 a.m.—Church school for all ages.
10:00 a.m.—Church school through grade 6.
10:00 a.m.—Church worship service: "High Cost of Hope."
6:00 p.m.—Junior High MYF.
7:00 p.m.—Senior High MYF.
Wednesday, March 31—
9:00-10:30 a.m.—WCS study, meets at the Charles Cameron home.

ZION LUTHERAN CHURCH
(Rogers Corners)
The Rev. C. J. Renner, Pastor
Saturday, March 27—
9:30 a.m.—Junior catechism.
10:45 a.m.—Senior catechism.
Sunday, March 28—
9:00 a.m.—Sunday school.
10:15 a.m.—Worship service.
Sermon topic: "Zion Your God Rules."
7:30 p.m.—Luther League meeting.
Monday, March 29—
4:30 p.m.—Junior choir.
8:00 p.m.—Senior choir.
Tuesday, March 30—
7:30 p.m.—Sunday school teachers meeting.
8:00 p.m.—Standard Oil and farmers meeting.
Wednesday, March 31—
8:00 p.m.—Lenten church service. Sermon topic: "Am I A Child of God?"
Thursday, April 1—
8:00 p.m.—Brotherhood meeting.

CHELSEA BAPTIST CHURCH
The Rev. Elmer S. Steenson, Pastor
Sunday, March 28—
10:00 a.m.—Sunday school.
11:00 a.m.—Worship service.
Nursery care available during Sunday school and worship service.
6:00 p.m.—Junior Young People's service and Senior Young People's service.
7:00 p.m.—Evening service.
Prayer meeting each Thursday at 7:30 p.m.

FIRST UNITED PRESBYTERIAN CHURCH
UNADILLA
The Rev. John Jeffrey, Pastor.
Sunday, March 28—
9:30 a.m.—Church school.
10:45 a.m.—Worship service.
Tuesday, March 2—
8:00 p.m.—Choir practice.



MAUSOLEUMS * MONUMENTS
BRONZE TABLETS * MARKERS

BECKER MEMORIALS
6033 Jackson Road
ANN ARBOR, MICHIGAN

ST. PAUL'S EVANGELICAL AND REFORMED CHURCH
(United Church of Christ)
The Rev. Donald C. Baacke, Interim Pastor, Ph. 475-7215
Thursday, March 25—
7:00 p.m.—Junior and Senior choir at the church (until Easter).
Saturday, March 27—
9:30 a.m.—Youth choir.
10:00 a.m.—Confirmation class catechism.

Sunday, March 28—
9:30 a.m.—Church school.
10:45 a.m.—Worship service.
Sermon topic: "I believe in Jesus Christ, the Liberator." Galatians 4:21 to 5:1.
5:30 p.m.—Sacramental supper in church dining room.

CONGREGATIONAL CHURCH
(United Church of Christ)
The Rev. R. A. J. Livingston, Pastor
Thursday, March 25—
4:00 p.m.—Junior choir.
7:00 p.m.—Senior choir.
8:00 p.m.—Union services at the Congregational church.

Sunday, March 28—
10:00 a.m.—Sunday school.
10:00 a.m.—Worship service.
Sermon topic: "Blessed are the Peacemakers."
1:00 p.m.—Fellowship pot-luck dinner following the church service.
Monday, March 29—
8:00 p.m.—Constitution committee meeting at the home of Mr. and Mrs. Robert Wagner.
Tuesday, March 30—
7:30 p.m.—Membership committee meeting.
Wednesday, March 31—
7:30 p.m.—Christian Education committee meeting.

FIRST ASSEMBLY OF GOD CHURCH
14300 Old US-12
The Rev. Harold S. Bilotta, Pastor
Sunday, March 28—
9:45 a.m.—Sunday school.
11:00 a.m.—Worship service.
7:00 p.m.—Evening service.
Wednesday, March 24—
7:30 p.m.—Mid-week prayer meeting at the parsonage.

FIRST CHURCH OF CHRIST SCIENTIST
1833 Washtenaw Ave., Ann Arbor
Sunday, March 28—
9:30 a.m.—Sunday school.
11:00 a.m.—Morning service.
The conversion and baptism of Saul of Tarsus, as told in the Acts of the Apostles, plays an important part in the Bible Lesson on "Reality."

BETHEL EVANGELICAL AND REFORMED CHURCH
(United Church of Christ)
Freedom Township
The Rev. T. W. Menzel, Pastor
Saturday, March 27—
9:00 a.m.-12:00—Confirmation classes.
Sunday, March 28—
10:00 a.m.—Worship service.
11:00 a.m.—Sunday school.
Wednesday, March 31—
8:00 p.m.—Lenten service.
The Adult Fellowship will hold a coffee hour following the service.

WATERLOO VILLAGE CHURCH
(Evangelical United Brethren)
The Rev. Wilbur Silvernail, Pastor
Sunday, March 28—
10:00 a.m.—Sunday school.
11:15 a.m.—Lenten worship service with "One Great Hour of Sharing" participation.
5:30 p.m.—District Youth Rally banquet for the Waterloo Area, at the Ann Arbor Evangelical United Brethren church with Bob Timberlake as speaker.

METHODIST HOME CHAPEL
The Rev. E. J. Weiss, Pastor
The Rev. John Fall, assistant
The Rev. Wm. Johnson, chaplain
Sunday, March 28—
8:00 p.m.—Worship service.
Lenten services every Tuesday at 7:00 p.m.
Tuesday, March 30—
Guest speaker, the Rev. Allen Gray from the Howell Methodist church.

ST. BARNABAS EPISCOPAL CHURCH
20500 Old US-12
The Rev. J. R. Smucker, Vicar
Sunday, March 28—
8:00 a.m.—Holy Communion.
10:00 a.m.—Morning Prayer and church school.
Wednesday, March 31—
7:00 a.m.—Holy Communion and breakfast.
The RCW meeting has been postponed for the month of March. Will meet again April 22.

ST. MARY'S CATHOLIC CHURCH
The Rev. Fr. Francis Maliszewski
Friday, March 26—
7:30 p.m.—Stations of the Cross and Benediction.
Sunday, March 28—
Masses at 6:30 a.m., 8:00 a.m., 10:00 a.m. and 11:30 a.m.
Wednesday, March 31—
7:30 p.m.—Mass and Lenten sermon.

NORTH SHARON COMMUNITY BIBLE CHURCH
Sylvan and Washburn Roads
The Rev. Paul Collins
Sunday, March 28—
10:00 a.m.—Sunday school.
11:00 a.m.—Worship service.
7:00 p.m.—Evening service.

SALEM GROVE METHODIST CHURCH
The Rev. George Nevin, Pastor
Sunday, March 28—
10:00 a.m.—Sunday school.
11:00 a.m.—Worship service.

ST. JOHN'S EVANGELICAL AND REFORMED CHURCH
(United Church of Christ)
(Francisco)
The Rev. J. Tracy Luke, Pastor
Sunday, March 28—
10:00 a.m.—Worship service.
11:00 a.m.—Church school.
7:00 p.m.—Youth Fellowship

ST. THOMAS EVANGELICAL LUTHERAN
Freedom Township
The Rev. H. Spomer, Pastor
Sunday, March 28—
10:00 a.m.—Worship service.
11:00 a.m.—Church school.
7:00 p.m.—Youth Fellowship

GREGORY BAPTIST CHURCH
The Rev. Millard Heron, Pastor
Sunday, March 28—
10:00 a.m.—Worship service.
11:15 a.m.—Church school, Fellowship.
6:30 p.m.—Baptist Youth.
7:30 p.m.—Evening worship.

ST. JOHN'S EVANGELICAL AND REFORMED CHURCH
(United Church of Christ)
(Rogers Corners)
The Rev. J. Tracy Luke, Pastor
Sunday, March 28—
9:30 a.m.—Worship service.
10:30 a.m.—Sunday school.
6:00 p.m.—MYF meeting.

Just A Minute...

By the Rev. James A. Craig

The story is fictitious, but it helps to make a point. The story is about two men, both badly wounded, waiting to be taken to a field hospital. One has the sure knowledge of the dying that he will not live to reach the hospital. He turns to his friend.

"It can't be long now. Listen, Dominique. You've lived a bad life. There are many convictions against your name. But there are no convictions on my name. Take my name. Take it—I give it to you. Straight off, you've no more convictions. Take my name and give me yours—so that I can carry it all away with me."

Henri Barbusse writes this in his novel "Le Feu."

The point? Only to illustrate what Martin Luther once said and what the Church has been trying to say for 2,000 years, almost.

Luther said we "must be Christ to our neighbor." We've often asked how or why. The author knows.

It involves a terrific risk. It involves your being willing to put yourself in the place of another—even to taking what he has done in order that he can start over.

Isn't that what Christianity is all about anyway?

God in Jesus Christ offers us the chance of starting over.

This Lent is a good time to begin.

St. Patrick's Day

Celebration Held at

St. Louis School

On St. Patrick's day Wednesday, March 17, the boys of St. Louis School had a party. Sister Annacleta baked a cake and Mr. and Mrs. Ed Beissel furnished the ice cream. Father Umberto and the boys' band played Irish songs. Mrs. Bill Robbins was an honored guest because originally she came to America from Ireland on St. Patrick's day.

Thursday, March 18, Col. Gerald Miller, Washtenaw county Civil Defense director, presented Dr. Thomas J. Nelson, teacher and psychologist at the St. Louis school, with a certificate that qualifies him to train personnel for Civil Defense work.

The public shelter at the St. Louis school was the first one in Washtenaw county.

Friday, March 19 was St. Joseph's day and Father Joseph Legan, director of the St. Louis school, celebrated his feast day by having a treat for the boys at noon time and a gift for all of the priests, nuns and employees of the school.

Protection
Use semi-gloss enamel for doors and entrance ways where traffic is heavy. This coating retains color well and lends itself to frequent washing.

CHURCH OF CHRIST
18691 Old US-12, East
G. Arthur Peddle, Pastor
Sunday, March 28—
10:00 a.m.—Bible study.
11:00 a.m.—Worship service.
6:00 p.m.—Worship service.
Bible study each Thursday at 7:00 p.m.

NORTH LAKE METHODIST CHURCH
The Rev. George Nevin, Pastor
(United Church of Christ)
Freedom Township
The Rev. T. W. Menzel, Pastor
Sunday, March 28—
9:30 a.m.—Worship service.
10:30 a.m.—Sunday school.
6:00 p.m.—MYF meeting.

LIGHTING STRIKE?
Your Auto-Owners Agent goes ALL-OUT FOR YOU

COMPLETE TAILORED PROTECTION FOR YOUR CAR, HOME, PERSONAL, BUSINESS.

Call

A. D. MAYER AGENCY

"Your Protection Is Our Business"

115 Park St., Chelsea, Mich.

Phone: Office 479-5061

Res.: GR 5-4201

Auto-Owners INSURANCE

SYLVAN TOWNSHIP

FINANCIAL STATEMENT AS OF MARCH 23, 1965
and Income and Disbursement Report March 24, 1964 to March 23, 1965

CONTINGENT FUND	
Balance on hand March 24, 1964	\$14,100.28
RECEIPTS—	
Sales Tax Diversion	\$11,709.57
Intangible Tax	1,770.22
Excess of Roll	4,245.70
Tax Collection 1964	19,505.17
Delinquent Taxes	476.22
15 Cents An Acre Tax	30.88
Specific Wheat Tax	12.13
Rent for Voting Machines	200.00
Interest On Certificates Of Deposits	900.00
Glazier Road Association	6,400.00
Village of Chelsea, McKinley Bridge	3,000.00
Miscellaneous	38.70
	47,478.39

TOTAL RECEIPTS	\$61,044.07
LESS DISBURSEMENTS—	
Salary Supervisor	\$ 8,000.00
Car Expense	600.00
Salary Clerk	1,500.00
Car Expense	100.00
Board Meetings	715.00
Board of Review	278.50
Zoning Board	422.83
Industrial Development Meetings	90.00
Election Expenses	1,275.54
Chelsea Fire Department	3,944.59
County Road Commission	25,000.00
Legal Fees & Accounting	554.80
Association Dues	25.00
Office Supplies, Postage & Printing	286.97
Justice of Peace Supplies	67.00
Rejected Taxes	13.14
Refund of Tax Sale Cancellation	3.21
Policing of Lakes	153.72
Civil Defense	320.00
Chelsea Public Library	1,000.00
American Legion for Graves	100.00
Chelsea Community Fair	200.00
Care of Cemeteries	478.45
Land Fill	500.00
Miscellaneous	76.00
	41,285.45

BALANCE ON HAND MARCH 23, 1965 \$20,359.22

TOWN HALL FUND

Balance on Hand March 24, 1964 \$ 377.03

RECEIPTS—

TOTAL	\$ 377.03
LESS DISBURSEMENTS—	
Improvements & Repairs	\$ 3.05
Insurance	72.33
Gas	69.66
Lights & Water	39.61
Telephone	109.90
Miscellaneous	9.98
	298.53

BALANCE ON HAND MARCH 23, 1965 \$ 78.50

POOR FUND

Balance on Hand March 24, 1964 \$ 622.94

Interest Received 21.97

BALANCE ON HAND MARCH 23, 1965 \$ 644.91

SUMMARY

Contingent Fund \$20,359.22

Town Hall Fund 78.50

Poor Fund 644.91

TOTAL ASSETS OF TOWNSHIP \$21,082.63

Balances with Chelsea State Bank:

Checking Account \$20,437.72

Savings Account 644.91 \$21,082.63

In addition the Township has an account receivable of \$208.33 outstanding delinquent taxes.

REPORT ON TAX COLLECTION

1964 Taxes Assessed \$478,668.66

Less Taxes Returned as Uncollected to County Treasurer 12,393.40

1964 Taxes Collected \$466,275.26

Delinquent Taxes Received 12,762.20

Specific Wheat Tax Collected 288.61

\$479,326.07

LESS DISTRIBUTION—

To Township Contingent Fund:

1964 Township Taxes \$ 19,504.61

Delinquent Taxes 476.22

Excess of Roll 4,245.70

Rejected Township Taxes .56

Specific Wheat Tax 12.13 \$ 24,239.22

To Washtenaw County—

1964 County Taxes \$ 99,070.79

Rejected County Taxes 3.24

Rejected Drain Taxes .18

1964 W. C. Intermediate School Taxes 11,614.51

Specific Wheat Tax 62.28 \$111,351.00

To Chelsea Public Schools—

1964 School District Taxes \$331,224.51

Rejected School Taxes 9.16

Delinquent Taxes 12,285.08

Specific Wheat Tax 214.20 \$343,735.85

\$479,326.07

BALANCE ON HAND

There is an amount of \$45.95 in the bank account which is unaccounted for.

Respectfully submitted,

LETHA G. BEACH, Twp. Treasurer

BACKS EDUCATION AID

Representative James Delaney broke the long

(D.N.Y.), a Roman Catholic Con-Johnson's approach of aiding chil-

dressman who has helped block dren of low-income families,

Federal aid to education bills in whether in public or private

the past, said the new Adminis- schools as "a great step forward."

tration bill should break the long

deadlock. He considers President

Johnson's approach of aiding chil-

dren of low-income families,

Federal aid to education bills in whether in public or private

schools as "a great step forward."

OUR PROBLEM

OUR PROBLEM is to get an important message across

to men who are sincerely seeking an opportunity

where future income is limited only by one's ability

and willingness to work. We are engaged in testing

public response and consumer acceptance type work.

We have an immediate company sponsored training

program. This automatically qualifies you for im-

mediate high income. We are not trying to proselyte

men from other companies but are trying to make

restless people on present jobs aware of something

better for themselves. I believe it should be worth

one hour of your time to hear of the fine prestige,

high income and tremendous potential offer we have.

Is it worth one hour of your time to hear OUR

PROBLEM and TO HELP WITH YOURS?

CALL 662-9304

for an appointment for interview

SURVIVES MASSIVE BURNS
Ashland, Mass. Judy White was months in the hospital and only 12 years old when she received deep burns over 72 per cent of her body while heating

CUSTOM SLAUGHTERING
By Appointment - Call GR 5-8280
COMPLETE MEAT PROCESSING
FRIGID PRODUCTS
LOCKER DEPARTMENT

Better Living Begins When You Own A New Home
CONSIDER LANEWOOD

INVITATION for BIDS
The Village of Chelsea will accept bids for its 1965 street construction program until 4 p.m. Thursday, April 19, 1965.
The work will be let in two sections: Section 1, grading, sand cushion and gravel base; Section 2, bituminous aggregate paving.
Specifications and bid blanks may be obtained from the Village Clerk, George Winans, or Peter Kurzy, consulting engineer, 3904 LaSalle St., Jackson, Mich.

VILLAGE of CHELSEA
GEORGE WINANS, CLERK

NOTICE
ANNUAL TOWNSHIP MEETING
NOTICE IS HEREBY GIVEN,
That the next Annual Township Meeting of the Electors of the

TOWNSHIP OF LYNDON
County of Washtenaw, State of Michigan
will be held at
LYNDON TOWN HALL
(Corner of North Territorial Road and Old M-92)
Beginning at 1:00 o'clock P.M., Eastern Standard Time
on
Saturday, April 3, 1965
Signed: EMMA GOODWIN
Township Clerk.
Dated: March 15, 1965.

NOTICE
ANNUAL TOWNSHIP MEETING
NOTICE IS HEREBY GIVEN,
That the next Annual Township Meeting of the Electors of the

TOWNSHIP OF LYNDON
County of Washtenaw, State of Michigan
will be held at
LYNDON TOWN HALL
(Corner of North Territorial Road and Old M-92)
Beginning at 1:00 o'clock P.M., Eastern Standard Time
on
Saturday, April 3, 1965
Signed: EMMA GOODWIN
Township Clerk.
Dated: March 15, 1965.

NOTICE
ANNUAL TOWNSHIP MEETING
NOTICE IS HEREBY GIVEN,
That the next Annual Township Meeting of the Electors of the

TOWNSHIP OF LIMA
County of Washtenaw, State of Michigan
will be held at
Lima Community Hall
Beginning at 1:00 o'clock P.M., Eastern Standard Time
on
Saturday, April 3, 1965
The proposed budget for the year 1965 will be presented at this meeting.
Signed: DUANE LUIK
Township Clerk.
Dated: March 15, 1965.

NOTICE
ANNUAL TOWNSHIP MEETING
NOTICE IS HEREBY GIVEN,
That the next Annual Township Meeting of the Electors of the

TOWNSHIP OF LIMA
County of Washtenaw, State of Michigan
will be held at
Lima Community Hall
Beginning at 1:00 o'clock P.M., Eastern Standard Time
on

CH 25, 1965
dog. After 13
epital and 30
erations. July
n April wed.
RING
3280
ING
CTS
iving
ns
u Own
tome
DD
DS
965 street
April 19,
grading,
inuous ag-
from the
consulting
EA
CLERK
NG
leeting
DON
igan
LL
1-92
rd Time
65
IDWIN
ip Clerk.
NG
eeting
A
igan
II
d Time
55
UICK
Clerk.

Tornado Safety Assured Only By Being Prepared

The approaching months of May and June, when the threat of tornadoes is so real, is also the time when the community must be prepared. It is only prudent to be prepared.

Training courses and classes on tornado characteristics and safety measures can save many lives and reduce property damage in the community ever be in the path of a tornado. Time spent in preparation will not be time wasted. If we never use the in-

formation—good if we do—all will be glad to have spent the time in classes and preparation. If one life in Washtenaw county can be saved, it will have been worth it. An informed community is a prepared community.

Local Civil Defense directors are encouraged to organize tornado classes, briefings or seminars in schools, churches, industry, business and civil organizations.

On the shore of Anchor Bay at Lake St. Clair last spring, 11 were killed; 244 injured, 132 homes destroyed, 236 homes seriously damaged, and 375 families involved with a total damage estimated at \$2½ million. Washtenaw county need not risk such a disaster.

Organizations augmented by local agencies can respond to a disaster, after it has occurred. Safety first comes first—protection is a "do-it-yourself" job for the family and the individual.

Get your copy of Tornado Safety Rules from your local Civil Defense Director Elwyn Beach in Chelsea or Vic Sindlinger in Dexter.

During a natural disaster the civil government is responsible for all community services and public utilities. Government will exercise full co-operation and support to the American Red Cross, Salvation Army, public utility companies and other bonifide agencies.

The chief executive of the political subdivision affected is in charge.

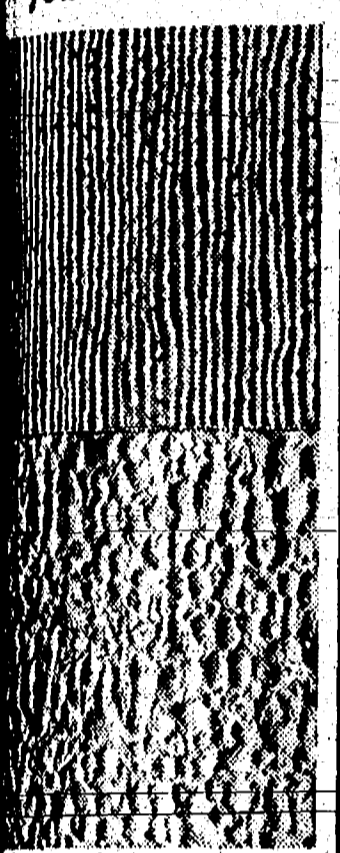
The county CD director is responsible for all county operations. Zone directors are deputies of the county director.

County Civil Defense services, including manpower and equipment are specifically organized to provide assistance throughout Washtenaw county.

Any part or all of the units listed are immediately available: County Civil Defense Office, Col. G. Miller, representative; Sherman Distributing Co., Martin Lee, representative; RACES R. Jenks, representative; Michigan Bell Telephone Co., N. J. Pakken, representative; County Emergency Information Office, Ross Childs, representative; Radio stations WOIA, WPAG, WAAM; Sheriff's Department, Sheriff Douglas Harvey, representative; Auxiliary Police, Police Department office; County Road Commission, H. G. Minier, representative; County Health Department, Dr. Otto K. Engelke, representative; local Fire Department and five chief; American Red Cross, W. de St. Aubin, representative; Salvation Army, Brig. G. Wilson and Major E. Garrett, representatives; Detroit Edison Co., J. L. Morgan, representative; Michigan Consolidated Gas Co., M. Lacy, representative; State Police, officer in charge; National Guard, officer in charge.

Gambles
the friendly store
WALLPAPER
IN
STOCK

Here Are
TEXTURED
WALLPAPERS
with embossing
you can SEE!



Choose from 2
Lovely Designs,
10 New Colors.

All are richly embossed,
all have gleaming
metallic highlights.

69¢
Roll

Gambles

when you buy this

FRIGIDAIRE JET ACTION WASHER!

YOU RECEIVE 5-YEAR PROTECTION
PLAN AT NO EXTRA COST!

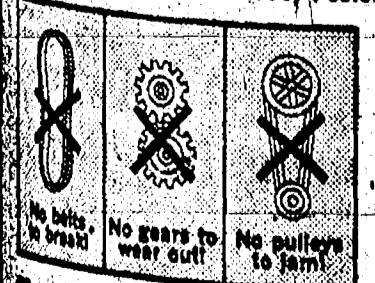


Automatic Soak cycle—
plus Jet Action
features galore!

- New Jet-Away lint removal "jets" lint, sump out of the tub.
- Jet spin saves drying time.
- Clothes come out loose and easy—even apron strings seldom snarl!
- Jet-simple design for maximum dependability!

\$199

Model WDA-66, 4 colors or white!



One-year warranty for repair of any defect without charge, plus four-year Protection Plan for furnishing replacement for any defective part in the transmission, drive, motor, or large capacity water pump.

MEABON'S
TV, Furniture & Appliances
170 M-52 South
Phone GR 5-5191

HALF-PAST TEEN



The
NATIONAL OUTLOOK

By GEORGE HAGEDORN

★ New Trends in Job Creation

Current trends in employment, as analyzed in Secretary of Labor Wirtz's recent Manpower Report, are encouraging in several respects. The rate of job creation accelerated quite dramatically in 1963 and 1964. And, perhaps even more significant, the distribution of new jobs among industries, occupations, and geographical regions has become more evenly balanced than in the period prior to 1963.

During the half-decade from 1957 to 1962 we experienced a period of economic sluggishness. Employment in non-agricultural industries increased at an average rate of only about 500,000 a year. Since agricultural employment was declining by about 200,000 annually, there was not much left to provide a net increase in jobs for the growing labor force.

Gratifying Trend
In 1963 the annual rate of new job creation in the non-agricultural sector stepped up to 1,100,000, and in 1964 to over 1,500,000. Farm jobs continued to disappear at about the same rate as before, but now there was a respectable net over-all gain. A slow, but gratifying, reduction in the unemployment rate has occurred during the past two years.

When one looks beyond these summary figures there has been a striking change in the composition of the new job opportunities. In the doldrum period of 1957 to 1962, there was an actual decline of about 100,000 jobs a year in the goods-producing industries—manufacturing, mining, and construction. All the new jobs were created in the service-producing category, including government. At most, half of the 500,000 annual net gain in non-farm employment occurred in government—mainly the state and local governments.

Spread More Evenly
But during the past two years the goods-producing industries have again become large contributors to the growth in employment. In 1964 the net increase in jobs in

these industries amounted to 420,000. Government employment has continued to expand but it now accounts for only about one-fifth, instead of one-half, of the total increase in jobs.

The reversal of trend has been most impressive in manufacturing. Between 1957 and 1962 there was an actual decline in employment in manufacturing, as compared with an increase of 300,000 jobs in 1964.

Furthermore, the new job opportunities are being spread more evenly over the country than was the case in the five years prior to 1962. The Pacific and Mountain regions, which in the earlier period were developing job opportunities faster than any other section, are now growing about in line with the general average. The Central and Southern states have stepped up their employment growth rates.

The decline in blue-collar employment was arrested, and dramatically reversed, in 1964. In that year blue-collar jobs increased by over 500,000.

Only time will tell whether these developments in 1964 will turn out to have been the beginning of new and continuing trends. But we may have to re-examine the belief, which became prevalent a couple of years ago, that blue-collar employment must inevitably decline and new job opportunities will all be in the service industries.

Astronaut Sees No Danger of Possible Collisions in Space
Elwyn Beach, Chelsea Civil Defense director, wrote a letter to one of our Gemini astronauts, John W. Young, about the danger of a collision in space between a manned spacecraft and any other object in space, and has been reassured by a letter from the astronaut himself that "such a possibility is so remote that no consideration whatsoever is given to this contingency in our flight plans."

NORTH ELEMENTARY SCHOOL NOTES

HONOR ROLL

5th GRADE—
"A" — Garry Collins, Bobby Craft, Patricia Eisele, Terry Elmman, Sherree Freeman, Daniel Gaunt, Judy Grau, Maryann Hess, Danny Hoover, Larry Hopkins, Leslie Irying, Larry Jones, Karen Keleman, Dennis Landwehr, Robert Mester, Janice McGaw, Mary Niehaus, Joan Platt, David Porath, Michael Reilly, Cynthia Reynolds, Michael Rossbach, Karen Schafer, Kathryn Schafer, Dean Schoenberg, Janet Sibley, Betty Snyder, Norbert Weber, Toni Weiler, Wayne Welton, Cheryl Wilkerson.

"A" — Cynthia Chandler, Greg Howard, Charles Lane.

Mr. Schmunk's Fourth Grade—
We have studied about Canada for about three weeks.

This week we have worked on the cities and the different ways people in Ohio earn a living. Seven of us listened to the President's speech Monday night. We think 100 years is too long a time to get a job finished.

We have each made a graph and placed them on our bulletin board. The graph is a comparison of how many years each of us have lived and the number of years such great men as Lincoln, Washington, Edison, Boone, Webster, Bell and Fulton lived.

To date, our class has purchased 16 tickets to the Senior Choir musical, "Oklahoma." Some of the rest of us will be going with out parents.

Mrs. Vonk's Fifth Grade—
Monday afternoon our science lesson was on invertebrates; animals without backbones. We learned about the protozoans, one celled animals and the metazoans, many celled animals. Many of us never thought of these in terms of being "animals."

One particular animal that impressed us was the amoeba. It is just a jelly-like blob and yet it carries on every life function. It has "false feet" which envelopes its food.

We became so interested that each of us has chosen an animal to report on. This report will include a drawing of the animal. A few chosen were: euglena, volvox, starfish, anopheles mosquito which causes malaria, the tsetse fly which causes sleeping sickness, and the paramoecium.

Many of us have received our "band aptitude letters." If we received one this meant we have musical ability or at least a little. A few of us have gotten our instruments already. Some of the instruments we will play are: clarinet, flute, French horn, saxophone, and trombone. Teacher got

one too, but there wasn't room for a "tuba player!"
Our art lesson was on making kites. Many of us thought this lesson was for "little kids" until we decided to try making some. Ours are small, good for decorating the room, and yet usable in a slight breeze. We are trying different shapes and are decorating them with faces and designs.

Mrs. Bonner's Third Grade—
English has seemed more interesting this week in our room. We have a Bulletin Board newspaper. Each child has written short articles which have been placed "in the newspaper." These have been fun to read as well as to write.

Mrs. Grau's Third Grade—
Our class has begun a new unit on sending and receiving messages. This is in connection with social studies. Animals have their own way of "speaking." Books, magazines, and newspapers give messages to many people. Codes are helpful as well as fun to work with. Later we will learn about the messages given by telephones, television, radio, letters, pictures and movies.

A few weeks ago we welcomed another new student, Deborah Cox to our classroom.
March birthdays have been celebrated by Mary Verchereau, Janis iseman, and Douglas Egeler.

Mrs. Baack's Fourth Grade—
Our spelldown champion for the past six weeks was again Mike Hess. He is a hard one to beat! The runner-up was Mark Grambau. Floyd Risner spelled many words for the losing team before he "went down."

We are beginning a new social studies unit about the fishing regions along the Atlantic Seacoast. We will study the state of Maine and learn how the people there make their living.

Jerry Barth brought us a sea shore collection which was very fitting for the unit.

Doris Beeman and Kim Wilkerson had birthdays in March.

Mrs. Jacobson's Kindergarten—
This is a general outline of what we are doing in the kindergarten.

We are starting to organize a rhythm band.

We are learning the months and the characteristics of each and the holidays and birthdays that fall in them.

We are growing an indoor garden. It looks like a vegetable garden.

We will be watching with great interest the Gemini space flight. On cold windy days we have been exercising indoors.

FULBRIGHT'S DECISION

Senator J. W. Fulbright (D., Ark.), chairman of the Senate Foreign Relations Committee, announced that he will not act as floor manager and defender of the Administration's \$3.88 bil-

lion foreign aid legislation. Fulbright's decision followed President Johnson's rejection of the Senator's demand that the economic and military programs be covered in separate authorization bills.

CALL
YOUR *Investors* MAN
to find out about five
MUTUAL FUNDS

Only he represents the exclusive distributor for INVESTORS Mutual, INVESTORS Stock Fund, INVESTORS Selective Fund, INVESTORS Inter-Continental Fund, and INVESTORS Variable Payment Fund. Also ask how to accumulate money on the installment plan with INVESTORS Syndicate of America.

For a free booklet (prospectus) on any of these companies, call him today. Or clip this advertisement and mail it to your INVESTORS man.

Investors
DIVERSIFIED SERVICES, INC.

Divisional Sales Mgr. Zone Manager
O. W. FAABORG JULIUS E. BLAESS
714 W. Michigan Ave. 1020 N. Fletcher Rd.
Jackson, Michigan Phone GR 5-8565

NOTICE

ANNUAL TOWNSHIP MEETING

Notice is Hereby Given, That the next Annual Township Meeting of the Electors of the **TOWNSHIP OF SHARON** County of Washtenaw, State of Michigan, will be held at **Sharon Township Hall** Beginning at 1:00 o'clock P.M. Eastern Standard Time on **Saturday, April 3, 1965** Signed: **DUANE HASELSCHWERDT** Dated: March 15, 1965.



HIGH SCHOOL

The American high school is an amazing and unique institution—it successfully combines social dancing with advanced chemistry, and Friday night football with honors courses in English and creative writing.

The American high school is based on the belief that students must be more than intellectually educated; they must also be prepared to take an active role in their communities and their government. While major emphasis is still placed on the three R's, educators have found that this just isn't enough anymore.

In the past, only the wealthy and most intellectually able students went to high school. Today, however, high school serves students of a wide range of mental and financial abilities—from the boy who is aiming for a doctorate

in physics to the boy who needs help with subtraction; from the girl who plans to attend one of the exclusive women's colleges to the girl who must work after school to pay for her high school textbooks.

In order to serve the varied needs and interests of its students, the American high school has broadened its curriculum to include courses in vocational training, homemaking, and social and cultural development. These additions haven't replaced the basic subjects; they have supplemented them.

Today's high school must prepare its students for tomorrow's world—it can't afford to neglect either the bright or the slow student and it must provide a good solid education for the vast group in the range between.

NOTICE

ANNUAL TOWNSHIP MEETING

NOTICE IS HEREBY GIVEN, That the next Annual Township Meeting of the Electors of the

TOWNSHIP OF DEXTER

County of Washtenaw, State of Michigan will be held at

Dexter Township Hall

Dexter Townhall Road
Beginning at 1:00 o'clock P.M., Eastern Standard Time

on
Saturday, April 3, 1965

In accordance with Public Act No. 43 of 1963, a hearing on the proposed Township Budget will be held at the Dexter Township Hall during the Annual Meeting Saturday, April 3, 1965, beginning at 1:00 p.m. All residents of the Township are privileged to attend and ask questions, or register objections.

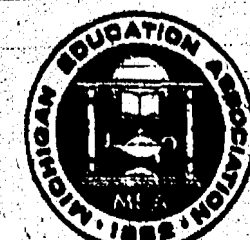
Copies of the budget are available for public inspection at the office of the clerk, 9825 Portage Lake Rd., Pinckney.

Signed: **ROBERT WHEELER**
Township Clerk.

Dated: March 15, 1965.



THIS IS ONE OF A SERIES OF EDUCATION FEATURES PUBLISHED AS A PUBLIC SERVICE IN COOPERATION WITH THE MICHIGAN PRESS ASSOCIATION, THE MICHIGAN EDUCATION ASSOCIATION, AND THIS NEWSPAPER.



Be There When the Curtain Opens
On Broadway's Greatest Musical

"OKLAHOMA"

at 8:00 p. m.

Friday & Saturday, March 26-27
at Chelsea High School Auditorium

LISTEN TO SUCH
ALL-TIME MUSICAL
HITS AS...

"Kansas City"

☆

"The Surrey With The
Fringe On Top"

☆

"I Can't Say No"

☆

"People Will Say We're
In Love"

☆

"Out Of My Dreams"

☆

"All Er Notin'"

☆

"Oklahoma"



Presented By the Senior Class of Chelsea High School

STARRING

JOHN BOWLINGas	Curly
AUDREY HAYESas	Laurie
ROGER FRISINGERas	Will
BECKY FREEMANas	Ado Annie
BOB SNYDERas	Jud
JAY LIVINGSTONas	Ali-Hakim
BARBARA DOYLEas	Aunt Eller
DEBBIE MILLERas	Gertie
BILL WENKas	Andrew Carnes
PAUL HUBERas	Cord Elam

GENERAL ADMISSION
TICKETS

\$1.00

Now On Sale
From Any Member
of the
Senior Class

This is Chelsea's first local musical comedy, and what finer choice could be made than the all-time musical hit "Oklahoma" from the pens of Rodgers and Hammerstein. This truly great musical has broken all attendance records of Broadway, from coast to coast, and all over the world. A stupendous success in the blending of music and comedy in one presentation.

Proceeds
from this show
will be put
into a special
fund for
musicals in
coming years.

The Cast and Members of the Senior Class Wish To Thank the Following Firms and Businessmen For Making This Announcement Advertisement Possible:

STRIETER'S MEN'S WEAR
SCHNEIDER'S GROCERY
FOSTER'S MEN'S WEAR
CHELSEA RESTAURANT
GAMBLES

KUSTERER'S FOOD MARKET
GROVE 5c to \$5 STORE
WONDER BAR
CHELSEA HEAT TREATING
W. E. FARRELL SHEET METAL

ROCKWELL-STANDARD CORP.
FEDERAL SCREW WORKS
CHELSEA LUMBER CO.
LONGWORTH PLATING
W. PEARSON CO.

RALPH'S TAVERN
FINKBEINER LUMBER CO.
BLAESS ELEVATOR CO.
WOLVERINE TAVERN
RECREATION TAVERN

SEITZ'S TAVERN
FARMERS' SUPPLY CO.
CENTRAL FIBRE PRODUCTS
CHELSEA MILLING CO.
CHELSEA PRODUCTS

Club and Social Activities

CLUB
The regular Chelsea Jaycee Auxiliary membership meeting was held March 10 at the home of Mrs. David Rowe with Mrs. Robin Wright as co-hostess.

JAYCEE AUXILIARY
The regular Chelsea Jaycee Auxiliary membership meeting was held March 10 at the home of Mrs. David Rowe with Mrs. Robin Wright as co-hostess.

OLDER ADULT GROUP

42 friends and members were present at a pot-luck dinner held Saturday at the Social Center of the Methodist church.

An opening prayer was given by the Rev. Lloyd Merrell of the Methodist Home.

The tables were set in the St. Patrick's Day motifs by Mrs. T. G. Riemenschneider, Mrs. Rae Lillie and Mrs. Lyman Adams.

A birthday cake, baked by Mrs. Hazel Hagelschwardt, was presented by Mrs. Helen Gadbary in honor of the birthdays of Mrs. Helen Kilmer, C. L. Koenig and Mrs. Sam Bohner.

Devotions were given by Mrs. Mabel Foster.

Austin Artz of Grass Lake showed pictures of Europe taken on a conducted tour he and his family took recently.

The next meeting will be April 17 with a pot-luck dinner.

A spring district meeting will be held March 30 at Blissfield. A delegation of local members will attend. The spring district is a meeting of both Districts 8 and 4. Chelsea is a member of District 8. Districts are elected to office by their district's delegation.

This year's joint J.C. and J.C. Auxiliary installation will be held April 24 in Jackson at a local supper club.

The next Jaycee Auxiliary membership meeting will be held April 20 at the home of Mrs. Charles Popovich with Mrs. Daniel Maroney as co-hostess.

VFW AUXILIARY

The regular meeting of the VFW Auxiliary unit 4076 was held Monday in the K. of C. Hall. Delegates who attended the sixth District meeting Sunday at Tecumseh gave reports.

The Auxiliary was presented a \$10 check for having 100 percent 1965 paid membership as of Dec. 31, 1964.

A motion was made to purchase flags which will be presented at a later date to the Waterloo church Sunday school and to the Chelsea Girl Scouts.

The legislative chairman urged all members to write their congressmen regarding the closing of Veterans' hospitals and to also write and ask that the 10 percent federal excise tax be repealed.

Next meeting will be April 12.

Raw silk, in beautiful, bright colors, is used for many of the new spring clothes. This is an ideal fabric for the girl who is travelling south or taking a cruise in southern waters. The three piece suit of raw silk is practical as well as attractive.

Spend less than you earn, and you can have social security of your own.



MORON ROLL

First Marking Period
Second Semester

Seniors — Robert Allen, Beverly Arnett, Janet Bollinger, Judy Bollinger, Jennifer Bolton, John Bowling, Valerie Burghardt, James Cameron, Gary Cook, Barbara Doyle, Katherine Eder, Julie Eisenmann (all A), Jane Faist, David Erlinger, Diana Grammatico, Carol Harley (all A), Donald Hinderer, Paul Huber, Carol Jelele, Thomas Johnson, Richard Lashon, Billy Ledford, Suzanne Liebeck, Jerry Manzel, Gary Moore, Dwayne Osterle, Sandra Osborne, David Priest, Alyce Riemenschneider, Janet Rohr, Linda Sanderson, Schunk, Cindy Schumm, Kathleen Sutter, Linda Wahl (all A), Audrey Wengren, Marilyn Wenk, Drinda West, Jerry Whitaker, Owen Wiveman, Diane Worden.

Juniors — David Blass, (all A), David Clark, Rickie Curry (all A), Penny Eisenbeiser, Lee Fahrner, (all A), Joseph Fisher, (all A), Kinyon Gorton, Patricia Guest, Lynn Heard, Cynthia Hepburn, Ann Heydlauff, Gary Houle, Lauralyn Johnson, Toby Johnson, Sandra Johnson, Linda Kealy, Linda Keezer, Nancy Koenigster, William Marsh, Patricia Opple, Laurie Reddeman, Danny Salver, Sara Schake, Michael Tarasow, Larry Wengren, Mary Winter, David Wood (all A), Doris Zeeb.

Sophomores — Mary Arnett, Eric Batzdorfer, Donna Bolanowski, Elizabeth Bower, John Collins, Kim Flintoft, Charles Fretz, Sue Gardner, Cheryl Graus, Susan Hines, Sheryl Kipfmiller, Janice Koenigster, Mary LaRose, Tina Lindauer, Robert MacDougall, Ellen Merkel, Elaine Paul, Larry Porath, Don Salver, Joann Schramm, Bruce Spencer, Sharon Sutter, Catherine Taylor, Susan Weller, Anita Wenk, Charles Wilans, Arlys Wiseman.

Freshmen — Kenneth Blass, Diane Brand, Nancy Buckingham, Janice Bush, Sandra Eisal, Lynn Faist, Joanne Fisher, Kathy Fuks, Susan Graw, Michael Grob, Gary Hepburn (all A), Shirley Howard, Sue Knickerbocker (all A), Sandy Knoll, Lynda Koch, Donald Koenigster, Deborah Kuhl, James LaFontaine, Mark Lancaster, Gary Lancaster, Gary Larson, John Lixey, John McKeighan, Ronnie Morley, Lanny Patrick, Sheryl Peffers, Faye Policht, Judy Salver, Carole Sharvard, Joyce Stephens, Shari Stoffer, Sarah Stoffer, Sarah Taylor, Carolyn Wenk.

GIRL SCOUTS
TROOP 47 — Girls of Troop 47 met Tuesday, March 23, at the Municipal building.

There was a party to celebrate the selling of so many Girl Scout cookies. Mary Lou McClure showed her collector's badge and Lou Ann Streiter her needlecraft badge. Mary Kay Slocum has completed her pet badge.

The girls are going swimming April 13, at the YWCA.

TEEN-AGERS PLAN CODE
Waltham, Mass. — A group of public and parochial high school students have drafted a code for teen-agers on what to wear, what to do, what time to get home — even how to drive. It is also a guide for parents who don't know what to tell their teen-agers.

CUB SCOUT NEWS

TROOP 143 —
Brownie Troop 143 met Monday afternoon and opened their meeting with the Brownie Promise and the Brownie Smile song.

Gail Haas and Terri Jones furnished treats.

New officers were elected with Debbie Luke, president; Janie Knot, vice-president; Melinda Newcome, treasurer; and Patty Schandl, scribe.

The girls worked on their tote bags and the meeting was closed with taps.

TROOP 144 —
Brownie Troop 144 met at the Congregational church, Monday, March 22 at 5:30 p.m. Some of the popcorn pictures were made of white bunny rabbits.

The girls discussed the dates they will be going to camp. Mothers are urged to send in registrations now. Car pools will be set up when all have decided when they are going to camp.

Treats were brought by Laurie Mann.

DEN 13, PACK 435 —
Cub Scouts of Den 13, Pack 435 met at the home of their den mother, Mrs. William Wade, Monday with eight boys present.

The boys painted their, paper mache masks which they will take to the pack meeting.

Donald Conklin brought treats and the meeting closed with the "living circle."

Tom Skittenhelm, scribe.

PACK 455 —
Cub Scouts of Pack 455 held their meeting Thursday evening, March 18, at St. Barnabas church.

The Webelos and Den 10 had the flag ceremony, then Den 9 sang two Mexican songs and Den 10 staged a bull fight.

At the closing each boy had a chance at the Mexican Pinata and received the candy it held.

Den 9 was the only one with perfect attendance.

Thomas Jefferson held the first Presidential Review when he reviewed the U. S. Marines at the White House in 1801.



CARPET MILLS favor BOSSO
to clean modern carpets
HOST consists of a Dry Cleaner and an Electric Brush designed for women to save work. This Machine brushes the pile upward, removing deep dirt and eliminating matting. No handwork. No wet carpet. Rooms can be used instantly. Ideal for all fibers.
Use our machine to clean 300 sq. ft. only \$9.95 (average home)
Phone us for information.

CAN YOU GUESS?
WHAT THESE LETTERS STAND FOR?
? M ? M ?
- Not A Candy
- Not A Personality
Coming to Chelsea April 1st
Something To Think About.
(See other advertisement elsewhere for additional clues.)

SPRING DISCOUNT SALE

HEAVY DUTY DUST PAN Assorted Plastic Colors 10¢	2-PIECE PLASTIC BUTTER DISH Colorful Unbreakable 10¢
JUMBO 32-OUNCE Freezer Containers Plastic With Lid 10¢	JST LIKE A SODA SHOP SODA GLASS With Sure-Grip Handle 10¢
JUMBO UNBREAKABLE MUG — 10¢	COLORFUL PLASTIC Sprinkler Bottle Perfect Ironing Helper 10¢
UNUSUAL DESIGN STIPPLE TUMBLER Discount Price 10¢	ADDS BEAUTY TO TABLE BREAD TRAY Colorful Plastic 10¢
UNBREAKABLE PLASTIC Salad or Soup Bowls Buy Several 10¢	ASSORTED COLOR PLASTIC Mustard or Catsup Plastic Containers Your Choice 10¢

BUDGET-WISE STORE
Chelsea's First Discount Store
116 SOUTH MAIN ST. PHONE GR 9-1611

Grass Lake Post Office
Taking Applications for Clerk, Carrier Positions
The postmaster at Grass Lake has announced the opening of a new Civil Service examination beginning March 18, for clerk and carrier positions at the Grass Lake post office.
Applicants must be at least 18 years old, and be a resident or bona fide patron of the Grass Lake post office.
The postal clerk and carrier positions offer a starting pay of \$2.48 per hour, automatic annual increases, liberal vacation and sick leave benefits, low cost health and life insurance plans, and generous retirement plan, and a uniform allowance.
Complete information and application forms may be obtained from the office of the Executive Secretary, Board of U. S. Civil Service Examiners, Room 217 Post Office Building, Lansing or from the Grass Lake post office.
Telephone Your Club News To GR 5-3681

Merle Leach To Head Michigan Week Committee
Appointment of six community chairmen for Michigan Week, May 16-22, has been announced by Albert J. Samborn, Washtenaw county chairman.
The men will have the responsibility for co-ordinating all Michigan Week activities in their communities.
Merle Leach of 1331 Freed Rd., a native of Chelsea and a customer engineer for IBM has been selected to head Chelsea activities.
In Dexter, Donald McIntyre, of 7445 Ann Arbor Rd., principal of Dexter High school will coordinate local activities.
For Ann Arbor, Avery Downer, manager of the Ann Arbor sales office of the Detroit Edison Co. He lives at 2107 Fernon.
For Manchester, Joseph Fitzgerald, of 324 Schaffer Court, an employee of the Schaffer Lumber Co., and Ted Roberts of 412 W. Main, who works at the Ford Motor Co.'s Rawsonville Plant.
For Saline, George Newton, Jr., 331 Mark Hannah, an instrument maker in the physics department at the University of Michigan.
For Ypsilanti, Fred Older of 111 S. Adams, a retired city engineer for the City of Ypsilanti.
Samborn said the city chairmen were chosen by the mayors of their cities and villages.

TIPS for your TOP from
TODDY and FRAN
Do you know why April 1 is called April Fool's Day? Neither do we. But we suspect it's because it's the beginning of an unpredictable month that makes fools out of all of us. We dress for rain and the sun shines — we dress for sun and it snows. Every weather change is a challenge to our hair-do. The best bet is to be prepared with a good permanent that will help our hair hold its style come hail or high water. Call us for the nicest permanent you could ask for. We're open evenings for your convenience at —
Magic Mirror Beauty Salon
6585 Jackson Rd., Ann Arbor
Phone 665-0816

FLAWLESS Keepsake DIAMONDS
Fine white color, expertly cut. The center diamond of every Keepsake engagement ring is guaranteed flawless (or replacement assured).
WINANS JEWELRY STORE

Schwinn "THE GREATEST"
THE DREAM BIKE OF EVERY BOY!
Boys everywhere know "Schwinn Bikes Are Best!" They ride better, look better and last longer because they're precision built. Buy the best! Buy Schwinn!
TYPHOON
A WORLD FAMOUS BICYCLE!
LOW MONEY-SAVING PRICE AND OUTSTANDING QUALITY!
If it is real value you are looking for in a bicycle, the Schwinn Typhoon is your best choice. Four-coat baked-on finish that laughs at wind and weather. Schwinn tubular rims that are many times stronger than ordinary bike rims. Genuine nylon cord tires for longer wear. Cantilever frame construction and full length chainguard.
\$39.95
24" \$38.95
20" \$36.95
— WE TRADE —
MERKEL BROS.

Everybody's Happy...



"Smiling Service"
works two ways
here. Try it and see!

You'll leave us smiling with satisfaction in our friendly, heads-up service. We'll be smiling with satisfaction in a new friend made.

PURE OIL PRODUCTS

HANKERD'S SERVICE

Tires — Batteries — Tune-Ups — Brake Service — Wheel Alignment
PHONE 479-3541 CHLSEA, MICH.



From Planning to Living!

BUILDING? REPAIRING? RENOVATING?

Start planning now to make your dreams of a better home come nearer to realization.

Take Home and Study Our

HOUSE PLAN BOOKS

These books include hundreds of plans to choose from. We have them for you to use... without obligation.

Finkbeiner Lumber Co.

Phone
Chlsea
GR 9-3881



On Old
US-12
Just off
S. Main

MARTIN STEINBACH, Owner

Dana Announces Promotion of Two Chelsea Men



W. E. HERRING

W. E. Herring has been appointed sales manager, special products, for the Salisbury Division of Dana Corp. Fort Wayne, Ind.

In announcing the appointment, W. H. Heywood, general sales manager of the Salisbury Division, noted Herring will head-up two of the Division's new product ventures... the marine drive and double-reduction axles for garden tractors. He will also be responsible for golf and utility car axles.

Prior to his new assignment, Herring was sales manager of Salisbury Division's Chelsea Products plant. He joined Dana Corp. in February 1958 and later that year, became product manager for power take-off products in the firm's former Standard Equipment Division, Toledo, O. Herring is a graduate of Michigan State University.

Harold L. Pennington has been appointed sales manager of Chelsea Products, according to R. W. Wagner, general manager of the power take-off and gear box manufacturing firm.

Pennington has been manager, production control, purchasing and personnel for Chelsea since November, 1963. He joined the firm in 1959 and subsequently served in accounting and cost supervision capacities. Prior to joining Chelsea, he was office manager of the Harrie M. Reed Co. in Jackson. Pennington replaces W. E. Herring, who has been transferred to the Dana Corporation Salisbury Division headquarters in Fort Wayne, Ind.



HAROLD "HAL" PENNINGTON

Camping, Hiking Group Will Form Local Chapter

The appointment of Jerrold F. Beaumont, 335 Washington St., as a Field Director for the National Campers and Hiker's Association was announced by State Director Don Woolworth, of Clio.

Jerry, who has long displayed a keen interest and outstanding ability in all phases of camping will be responsible for developing the NCHA's program in this area.

The Beaumonts first started camping five years ago as a family. Jerry has been camping off and on for 30 years. The Beaumonts started camping with a tent trailer, and now use a travel trailer. Today, they and their children, Gordon, 12; Susan, 9; and Douglas, 6, travel the highways and byways with their trailer. Jerry is the publisher of a book "TOTAL Guide to Highway Regulations," intended for the traveling-camper enthusiast.

One of the new Field Director's first jobs will be to organize a local, self-governing chapter. The purpose of the new chapter will be to plan and attend chapter, state and national gatherings where members will make new and rekindle old friendships, show slides and movies, enjoy pot-luck dinners, swap campfire tales and recipes and share information about camping equipment.

The National Campers and Hiker's Association is the oldest, largest and fastest growing camping group in the country. The NCHA invites camping families to contact the Beaumonts to join the outdoors fun and fellowship.

The way a motorist uses the automobile horn is a test of good manners.

CB Emergency Radio Group Visits Lansing School for Blind

Several members of the local Chelsea Citizens Band Emergency Service were guests of James Versailles, Tuesday, March 16, and attended the Michigan School for the Blind in Lansing. Those attending were: Robert Dorer, James Versailles, Ken Bucholz, James Draper, Bert Clark and Elwyn Beach.

Robert Thompson, superintendent of the school, met the group at the Administration office and escorted them to one of the classrooms where the fifth and sixth grade classes were in session. The teacher in charge of the class had been Jim Versailles' teacher in 1958.

The group watched the children do math problems and write and read using slates and stylus and Braille printers.

Jim Oudsema then took the group to the athletic building where the children bowl and even set pins. This building has a modern gymnasium, a swimming pool and a wrestling room.

After the tour through the well-equipped and modern Health Center, which includes two full-time nurses and a complete hospital, the group was taken to the craft shops and watched the interesting way wood, metal, ceramics and other craft media are being used.

14th Coast Guard District Command (Pacific Northwest) rescued more than 300 people from the devastating Oregon floods in late 1964.

Junior High HONOR ROLL

1st Period - 2nd Semester

5th GRADE — Shelley Baize, Valli A. Barbara, J. Bauer, Ronald Bollinger, Terri Boyer, Lance Burghardt, Brenda Collins, Amy Cook, Lynn Ferguson, Michael Grau, Susan Guenther, Jane Kalmbach, Keith Kusterer, Karen Leach, Sarah Lindauer, Pat Livermore, Richard Marshall, Donald Passow, John Potts, Judy Sanderson, Diane Schenk, Ryan Smith, Greg Stephens, Thomas Thomson, Lynn Visel.

6th GRADE — Jacquie Bailey, Trina Bentley, Floyd Boyce, Robert Brassow, David Bust, Vickie Clemons, Stephen Eiseman, Terry Freysinger, Beverly GeBott, Patricia Gilbert, Kathryn Grob, Tom Henricks, Jeanne Hindeler, Rhonda Kern, Kent Livingston, Gail Maistre, Dennis Morgan, Jane Oesterle, Bruce Parks, Bobby Peterson, Rod Powers, Douglas Schoenberger, Brenda Seitz, Roxanne Shears, Retha Shees, John Sutter, Connie Taylor, Tom Tibb, Anne Travis, Vickie Wilkerson.

First Spring Robin

Mrs. Frederick Schultz of 20164 W. Old US-12 thinks maybe she has sighted the first robin of spring. Sunday she had a robin in her yard eating on a piece of apple that had been thrown out. Spring had officially arrived the day before so Mrs. Schultz thinks this is possibly at first.

BAILEY'S RESTAURANT

Corner of Clear Lake Road and I-94

Good Home Cooking

SUNDAY, MARCH 28

SWISS STEAK

Vegetable - Tossed Salad - Hot Rolls

\$1.40

April 4—Roast Pork & Dressing April 11—Roast Turkey & Dressing

W. E. FARRELL SHEET METAL

INDUSTRIAL AND GENERAL SHEET METAL WORK

115 WEST MIDDLE STREET—CHLSEA

PHONE Greenwood 9-2011

Don't Miss the

CORN CLINIC

CHLSEA

ZION LUTHERAN CHURCH

ROGERS CORNERS

POSTPONED TO TUESDAY, MARCH 30

at 8:00 p.m.

Specialists will discuss:

- ★ Latest methods of weed control. New recommendations and applications.
- ★ Herbicide application techniques.
- ★ How to boost yield through effective weed control.

Question and Answer Session following program.

— SPONSORED BY —

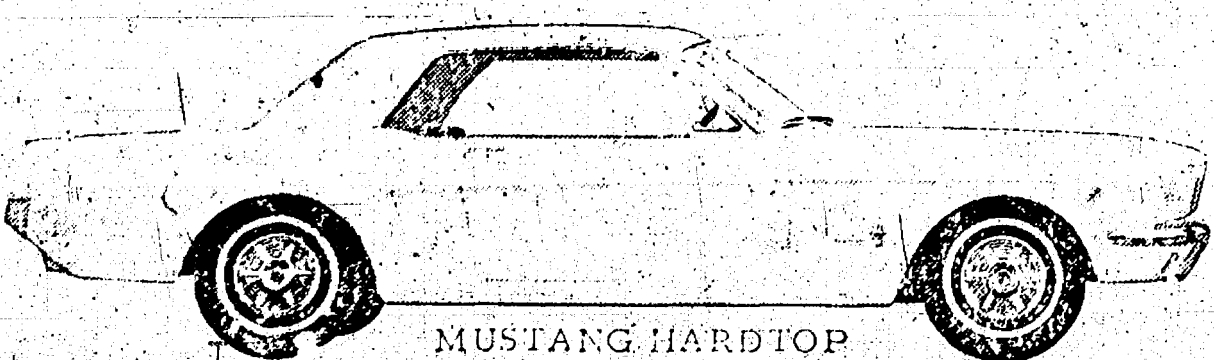
STANDARD OIL DIVISION

GEORGE A. KNICKERBOCKER, Agent
1221 Freer Rd. Phone 479-3131

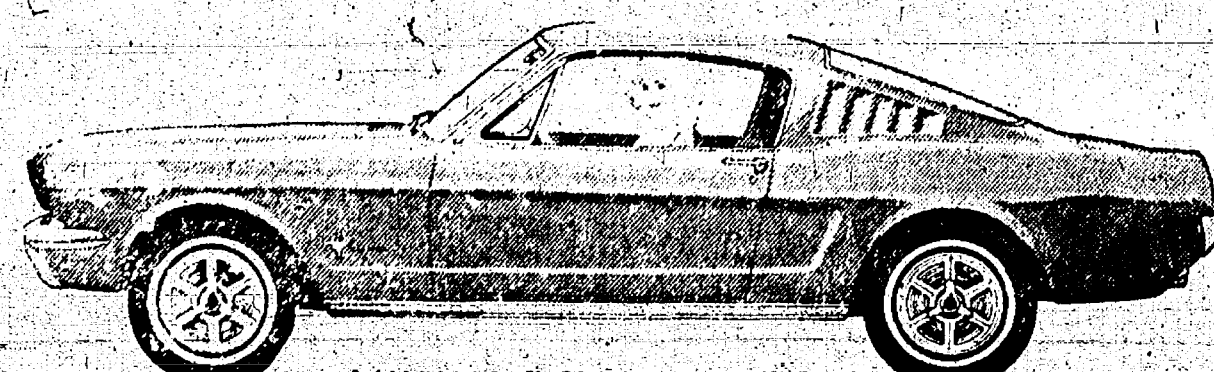
GEORGE WACKER, Agent
Manchester

MUSTANG SALE CONTINUES THROUGH APRIL 17

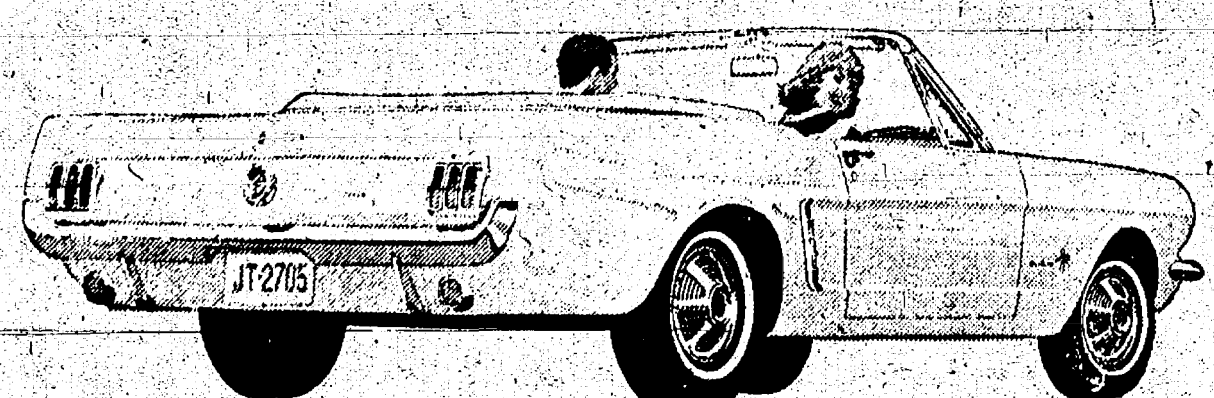
NOW For A Limited Time Only
you can have your choice of America's most exciting new car at a sharply REDUCED PRICE! Hurry while the selection of colors and equipment is still good.
IMMEDIATE DELIVERY



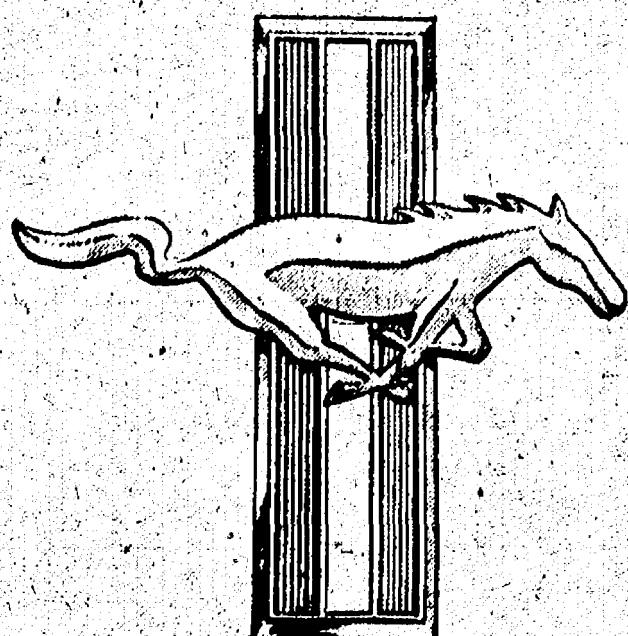
MUSTANG HARDTOP

\$2185⁰⁰

MUSTANG FASTBACK 2+2

\$2365⁰⁰

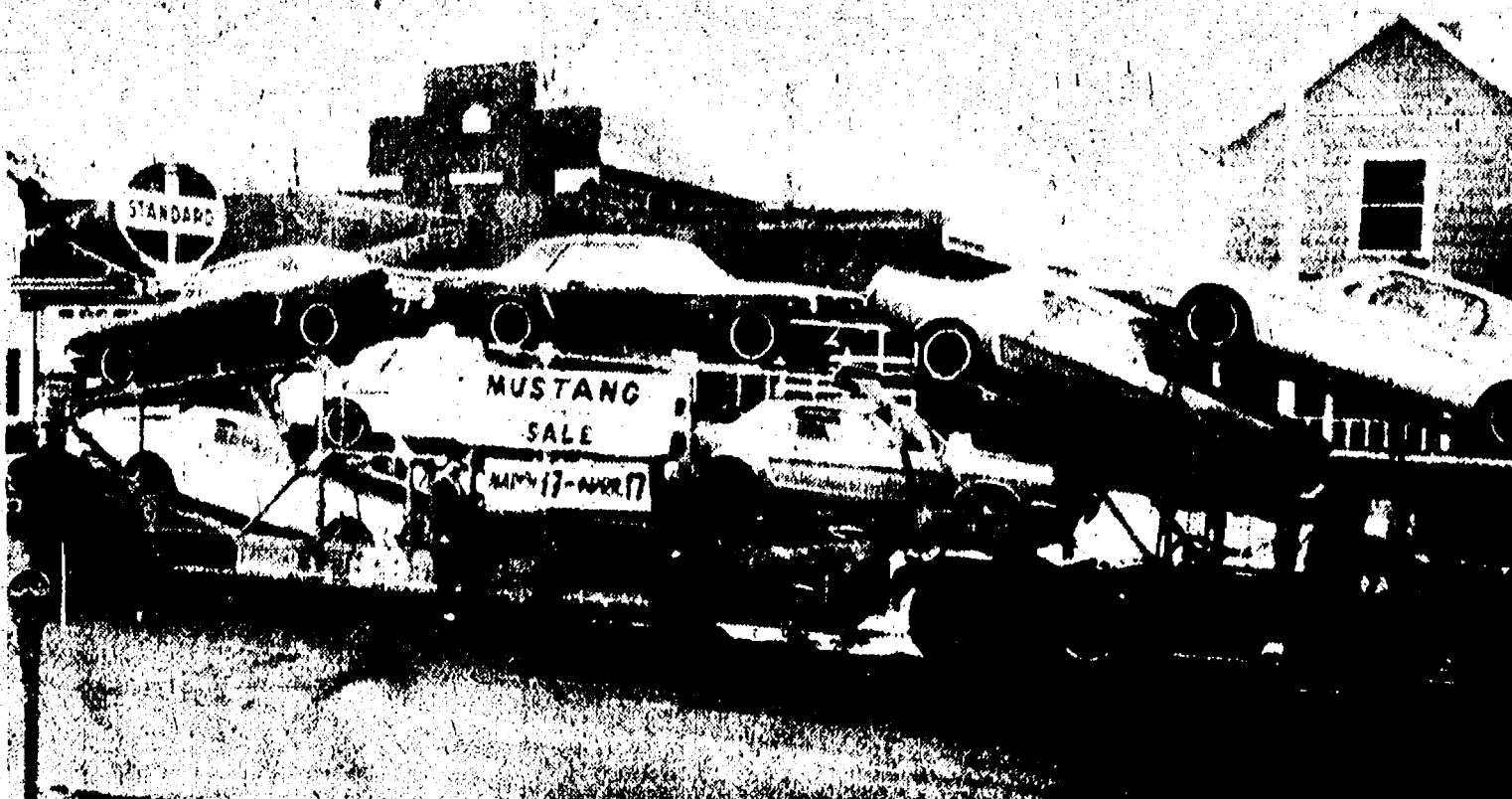
MUSTANG CONVERTIBLE

\$2385⁰⁰

MUSTANG

ONLY \$100 DOWN

As Low As
\$68 Per Month
Delivered



SPECIAL CARLOAD PURCHASE

ORCHARD



FORD CORNER

MAIN

PALMER

50-YEAR DEALER